



MEDICAL EQUIPMENTS

2015 VERSION



Ningbo GREETMED Medical Instruments Co.,Ltd.

Add: 18F, No.1 Building, Wante Business Centre, Hi-Tech Zone, Ningbo, China

Tel: 0086-574-87739070, 87722370

Fax: 0086-574-87739075, 87722360

E-mail: info@china-greetmed.com

[Http://www.china-greetmed.com](http://www.china-greetmed.com)



www.china-greetmed.com



**Ningbo GREETMED
Medical Instruments Co.,Ltd.**

MEDICAL EQUIPMENTS

2015 VERSION



Brief introduction

We, Ningbo Greetmed Medical Instruments Co., Ltd., located in the second biggest sea port city--Ningbo, China. We are one of the professional & biggest suppliers for medical devices and equipments, We have established very closely relationships with hundreds of excellent Chinese enterprises for long term. We are supplying high-quality products and best service to big hospitals and purchasers in the whole world. Meanwhile, we also introduce the overseas high technical products to meet our increasingly domestic markets.

Our leading products are stretcher, Hospital bed, Type-B ultrasonic machine, fitness equipment, infant incubator, shadow-less lamp ,patient monitor, etc. All our products have approved by CE and ISO.

We engage the professional engineer as the technical adviser of our company, for providing innovative, production and quality control, also, we have many sale- staffs, they master technology and production, service for our clients from hundreds of countries and areas.

We see are “Top-quality products, Most competitive price, Very excellent service” as our tenet. for all old and new clients .



Contents

P01-10

Outdoor

- 1、Foldaway Stretcher
- 2、Stretcher for Ambulance Car
- 3、Scoop Stretcher
- 4、Stair Stretcher
- 5、Emergency Bed
- 6、Vacuum Mattress Stretcher
- 7、Basket Stretcher
- 8、Carry Sheet
- 9、Spine Board
- 10、Body Splint
- 11、Head Immobilize
- 12、Splint
- 13、Cervical Collar

P37-70

ICU

- 1、Hospital Bed
- 2、Baby Bed
- 3、Bedside Cabinet
- 4、Infant Incubator
- 5、Infant Radiant Warmer
- 6、Neonate Bilirubin Phototherapy Equipment
- 7、Monitor
- 8、ECG
- 9、Oxygen Generator
- 10、Fetal Doppler
- 11、Ultraviolet Sterilizing Lamp Car
- 12、Bedsore Prevention Cure Mattress
- 13、Oxygen Bag
- 14、Oxygen Cylinder

P79-84

Others

- 1、Adult Heart Model
- 2、Human Skeleton Model
- 3、CPR Training Manikin
- 4、Brain with Arteries Model
- 5、Skull Model
- 6、Basic Nursing Manikin
- 7、Dual-Sex Torso-27 parts
- 8、Basic Nursing Manikin
- 9、Median Section of Male Pelvis Model
- 10、Median Section of Female Pelvis Model
- 11、Eyes Model-6parts

P11-36

Operation Room

- 1、Electrical Operation Table
- 2、Electrical Obstetric Bed
- 3、Multi-Functional Operation Table
- 4、Orthopedics Tractor Rack
- 5、Chair-mounted Dental Unit
- 6、X-RAY Machine
- 7、Shadowless Operation Lamp
- 8、Ultrasound Scanner
- 9、Suction Machine
- 10、Stomach Cleaning Machine

P71-78

The Basic

- 1、Infusion Stand
- 2、Trolley
- 3、History Trolley
- 4、Movable Table
- 5、Transfusion Chair
- 6、Waiting Chair
- 7、Inspect Bed
- 8、Nurse Chair

Foldaway Stretcher

Outdoor



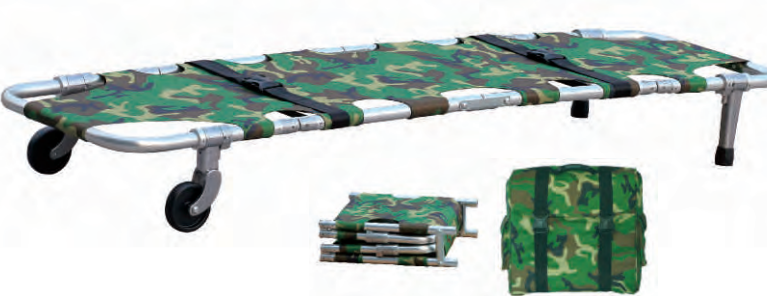
>> GT510-002
Foldaway Stretcher
Unfolded Size(LxWxH): 186x51x17cm;
Folded Size(LxWxH): 92x51x10cm;
Self Weight: 6kgs;
Load Bearing: 160kgs;
Packing: 2pcs/97x55x20cm;
G.W.: 13kgs.



>> GT510-003
Foldaway Stretcher
Unfolded Size(LxWxH): 186x51x25cm;
Folded Size(LxWxH): 92x51x13cm;
Self Weight: 7kgs;
Load Bearing: 160kgs;
Packing: 2pcs/97x55x20cm;
G.W.: 17kgs.



>> GT510-018
Foldaway Stretcher
Unfolded Size(LxWxH): 186x51x8cm;
Folded Size(LxWxH): 92x51x10cm;
Self Weight: 4kgs;
Load Bearing: 160kgs;
Packing: 2pcs/97x55x20cm;
G.W.: 6kgs.



>> GT510-004
Foldaway Stretcher
Unfolded Size(LxWxH): 185x51x21cm;
Folded Size(LxWxH): 50x51x16cm;
Self Weight: 7kgs;
Load Bearing: 160kgs;
Packing: 1pc/56x54x20cm;
G.W.: 9kgs

Foldaway Stretcher

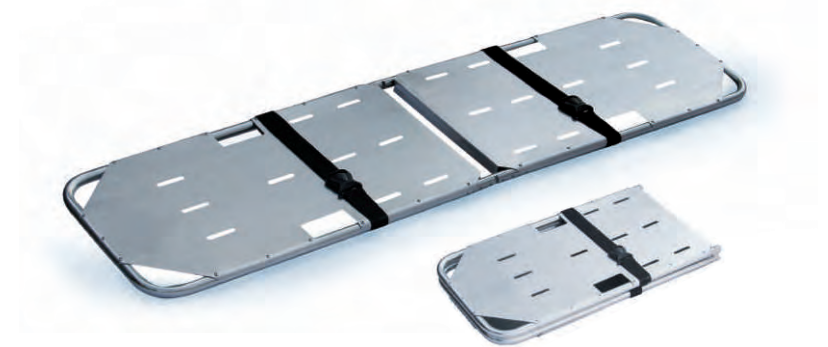


>> GT510-048
Foldaway Stretcher
 Unfolded Size(LxWxH): 216x55x14cm;
 Folded Size(LxWxH): 56x22x20cm;
 Self Weight: 8kgs;
 Load Bearing: 160kgs;
 Packing: 1pc/62x24x28cm;
 G.W.: 7kgs.

>> GT510-049
Foldaway Stretcher
 Unfolded Size(LxWxH): 190x53x22cm;
 Folded Size(LxWxH): 103x53x22cm;
 Self Weight: 15kgs;
 Load Bearing: 160kgs;
 Packing: 1pc/105x56x19cm;
 G.W.: 17kgs.



>> GT510-038
Foldaway Stretcher
 Unfolded Size(LxWxH): 190x54x15cm;
 Folded Size(LxWxH): 95x20x9cm;
 Self Weight: 8kgs;
 Load Bearing: 160kgs;
 Packing: 1pc/191x17x12cm;
 G.W.: 9kgs.



>> GT510-005
Foldaway Stretcher
 Unfolded Size(LxWxH): 187x50x4cm;
 Folded Size(LxWxH): 93x50x11cm;
 Self Weight: 8kgs;
 Load Bearing: 160kgs;
 Packing: 2pcs/98x56x19cm;
 G.W.: 17kgs.

Stretcher for Ambulance Car



>> GT510-022
Stretcher For Ambulance Car
 High Position(LxWxH): 195x56x92cm;
 Low Position(LxWxH): 195x56x29cm;
 Maximum Angle of the Back: 50°;
 Self Weight: 35kgs;
 Load Bearing: 181kgs;
 Packing: 1pc/206x62x31cm;
 G.W.: 49kgs.



>> GT510-012
Stretcher For Ambulance Car (standard)
 High Position(LxWxH): 196x55x88cm;
 Low Position(LxWxH): 196x55x26cm;
 Maximum Angle of the Back: 53°;
 Self Weight: 33kgs;
 Load Bearing: 181kgs;
 Packing: 1pc/202x62x27cm;
 G.W.: 48kgs.



>> GT510-029
Stretcher For Ambulance Car
 High Position(LxWxH): 194x54x93cm;
 Low Position(LxWxH): 194x54x34cm;
 Maximum Angle of the Back: 70°;
 Max Angle of the Knee Part: 20°;
 Self Weight: 42kgs;
 Load Bearing: 181kgs;
 Packing: 1pc/202x62x41cm;
 G.W.: 46kgs.



Scoop Stretcher / Stair Stretcher



>> GT510-006
Scoop Stretcher
Unfolded Size(LxWxH): 211x42x7cm;
Folded Size(LxWxH): 121x42x10cm;
Self Weight: 9kgs;
Load Bearing: 160kgs;
Packing: 1pc/170x7x43cm;
G.W.: 11kgs.

Emergency Bed



>> GT510-016
Emergency Bed
High Position(LxWxH): 191x55x89cm;
Range from Bed Surface to
Ground:61cms;
Size of the Castors: ϕ 150mms;
Self Weight: 35kgs;
Load Bearing: 160kgs;
Packing: 1pc/195x63x36cm;
G.W.: 42kgs.

>> GT510-030
Scoop Stretcher
Unfolded Size(LxWxH):
186x43x7cm;
Self Weight: 8.5kgs;
Load Bearing: 250kgs;
Packing: 1pc/189x49x7cm;
G.W.: 10kgs.



>> GT510-011
Stair Stretcher
Unfolded Size(LxWxH):
71x53x94cm;
Folded Size(LxWxH):
94x53x23cm;
Self Weight: 10kgs;
Load Bearing: 159kgs;
Packing: 1pc/95x57x23cm;
G.W.: 12kgs.



>> GT510-032 Emergency Bed
High Position(LxWxH): 191x55x89cm;
Range from Bed Surface to Ground: 61cms;
Size of the Castors: ϕ 150mms;
Max Angle of the Back: 70°;
Self Weight: 37kgs; Load Bearing: 160kgs;
Packing: 1pc/197x63x52cm; G.W.: 47kgs.



>> GT510-017 Emergency Bed
High Position(LxWxH): 191x59x88cm;
Low Position(LxWxH): 191x59x57cm;
Size of the Castors: ϕ 150mms;
Max Angle of the back: 65°;
Self Weight: 81kgs; Load Bearing: 250kgs;
Packing:1pc/198x71x68cm; G.W.: 100kgs.



>> GT510-033 Emergency Bed
High Position(LxWxH):190x61x82cm;
Low Position(LxWxH): 190x61x59cm;
Size of the Castors: ϕ 150mms;
Max Angle of the Back: 45°;
Load Bearing: 227kgs;
Packing:1pc/198x71x68cm;
G.W.: 100kgs.



>> GT510-031
Stair Stretcher
Unfolded Size(LxWxH):
72x54x100cm;
Folded Size(LxWxH):
100x54x28cm;
Self Weight: 20kgs;
Load Bearing: 227kgs;
Packing: 1pc/103x28x57cm;
G.W.: 22kgs.



Vacuum Mattress Stretcher / Basket Stretcher / Carry Sheet



>> GT510-025

Vacuum Mattress Stretcher

Unfolded Size(LxWxH): 197x97x7cm;
Self Weight: 6kgs;
Packing: 1pc/96x60x29cm;
G.W.: 12kgs.

>> GT510-010

Basket Stretcher

Unfolded Size(LxWxH): 218x64x18cm;
Folded Size(LxWxH): 123x64x22cm;
Self Weight: 18kgs;
Load Bearing: 270kgs;
Packing: 1pc/130x68x31cm;
G.W.: 25kgs.



>> GT510-034

Carry Sheet

Unfolded Size(LxW): 210x75cm;
Folded Size(LxW): 55x26cm;
Self Weight: 3kgs;
Load Bearing: 100kgs;
Packing: 5pcs/65x30x21cm;
G.W.: 14kgs.



GT510-008B

GT510-009B

GT510-008A

Spine Board

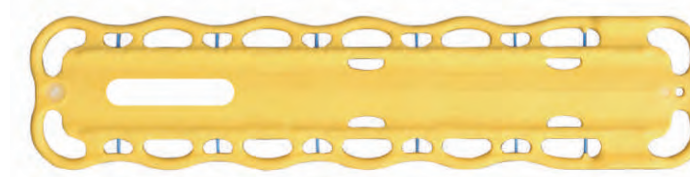
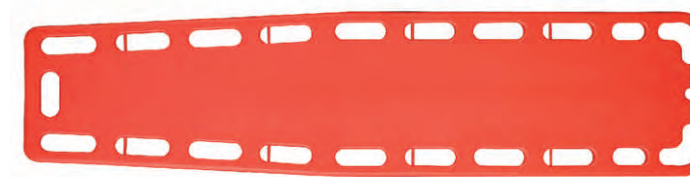
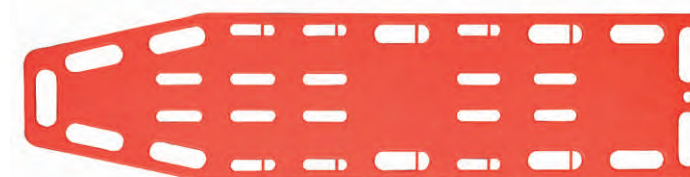
>> GT510-008A/008B/009B

Spine Board

GT510-008A Unfolded Size(LxWxH): 184x45x6cm;
Self Weight: 8kgs; Load Bearing: 160kgs;
Packing: 1pc/187x48x7cm; G.W.: 10.5kgs.

GT510-008B Unfolded Size(LxWxH): 187x41x6cm;
Self Weight: 6.5kgs; Load Bearing: 160kgs;
Packing: 1pc/187x48x7cm; G.W.: 9kgs.

GT510-009B Unfolded Size(LxWxH): 136x35x5cm;
Self Weight: 4.5kgs; Load Bearing: 80kgs;
Packing: 1pc/142x39x8cm; G.W.: 7kgs.



>> GT510-007B1

Spine Board

Unfolded Size(LxWxH): 185x46x5cm;
Self Weight: 7kgs;
Load Bearing: 160kgs;
Packing: 1pc/187x48x7cm;
G.W.: 11kgs.

>> GT510-007B2

Spine Board

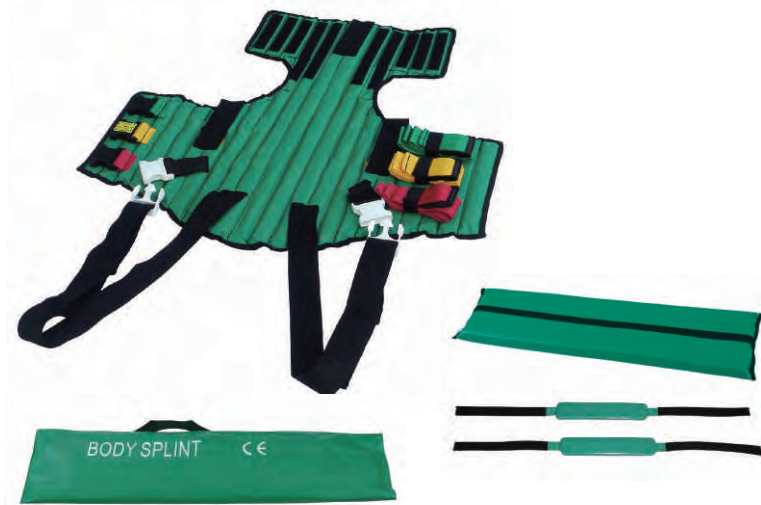
Unfolded Size(LxWxH): 183x45x6cm;
Self Weight: 7kgs;
Load Bearing: 160kgs;
Packing: 1pc/187x48x7cm;
G.W.: 10kgs.

>> GT510-040

Spine Board

Unfolded Size(LxWxH): 184x41x6cm;
Self Weight: 6kgs;
Load Bearing: 205kgs;
Packing: 1pc/188x43x8cm;
G.W.: 8kgs.

Body Splint / Head Immobilize



>> GT510-026L
Body Splint
 Unfolded Size(LxW): 82x71cm;
 Self Weight: 3kgs;
 Packing: 2pcs/86x28x19cm;
 G.W.: 8kgs.



>> GT510-026C
Body Splint
 Unfolded Size(LxW): 59x64cm;
 Self weight: 2kgs;
 Packing: 2pcs/62x20x20cm;
 G.W.: 4kgs.



>> GT510-027L
Head Immobilize
 Unfolded Size(LxWxH):
 40x26x16cm;
 Self Weight: 1kg;
 Packing: 8pcs/54x45x63cm;
 G.W.: 11kgs.



>> GT510-027C
Head Immobilize
 Unfolded Size(LxWxH):
 26x34x14cm;
 Self Weight: 0.5kg;
 Packing: 10pcs/58x38x56cm;
 G.W.: 8kgs.

Splint / Cervical Collar



>> GT510-045
Splint
 Self Weight: 3kgs;
 Packing: 2pcs/75x34x20cm;
 G.W.: 6kgs.

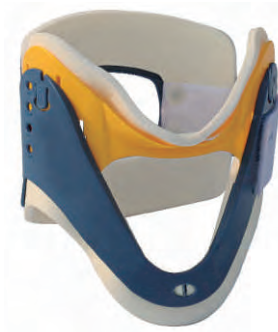
>> GT510-046
Splint
 Self Weight: 1.5kgs;
 Packing: 1pcs/92x36x16cm;
 G.W.: 2kgs.



>> GT510-047 Splint
 Self Weight: 1kgs;
 Packing: 8pcs/52x28x25cm;
 G.W.: 10kgs.



>> GT510-028A
Cervical Collar
 Unfolded Size(LxWxH):
 56x19x0.5cm;
 Self Weight: 0.2kg;
 Packing: 40pcs/59x43x27cm;
 G.W.: 7kgs.



>> GT510-028B
Cervical Collar
 Unfolded Size(LxWxH):
 54x13x0.5cm;
 Self Weight: 0.1kg;
 Packing: 40pcs/61x45x39cm;
 G.W.: 6kgs.



Electrical Operation Table

>> GT602-213 Electrical Operation Table



Features:

- The bed surface adopts imported carbon plastic plate, the table can be moved vertically which can fulfill the needs of C typearm whole body examination.
- Every actions of the motor are controlled according to electric motor working principle and by remote controller.
- Both sides of the bed rail for the high quality 304 stainless steel.
- The mattress is wrapped with imported artificial leather.
- High-density memory sponge is formed in one piece, with no seam.
- Imported brand motor without noise and with long life-span.
- The base seat and upright column covering are made of high quality 304 stainless steel which can be easily cleaned and sterilized.
- Foot treadle brake device which is easy for moving operation table.

Technical Specification:

Table length: 2000±50mm
Table width: 500±20mm
Maximum and minimum height of the platform: (700~900)±50mm
Horizontal and longitudinal movement: ≥400mm
Back board fold upward: ≥40°
Forward: ≥20°
Backward: ≥20°
Leftward and Rightward: ≥15°
Head board fold upward: ≥40°
Head board fold downward: ≥90°
Leg board fold downward: ≥90°
Leg of board split: ≥180°
Waist board lifting: ≥100mm
Output power: ≤300VA
Main Voltage: AC220V 50Hz

Accessories:

A pair of shoulder support frame;
A pair of waist support frame;
A pair of arm resting frame;
A pair of leg support frame;
A screen frame;
A pair of pedal foot board;
A waistband.

Operation Room



Electrical Operation Table

>> GT602-215

Electrical Operation Table



Features:

- The bed surface adopts imported carbon plastic plate, which can fulfill the requirements of X-ray examination, photography.
- Every actions of the motor are controlled according to electric motor working principle and by remote controller.
- Both sides of the bed rail for the high quality 304 stainless steel.
- The mattress is wrapped with imported artificial leather.
- High-density memory sponge is formed in one piece, with no seam.
- Imported brand motor without noise and with long life-span.
- The base seat and upright column covering are made of high quality 304 stainless steel which can be easily cleaned and sterilized.
- Foot treadle brake device which is easy for moving operation table.

Technical Specification:

Table length: 2000±50mm
Table width: 500±20mm
Maximum and minimum height of the platform: (750~1000)±50mm
Back board fold upward: ≥50°
Back board fold downward: ≥20°
Forward: ≥20°
Backward: ≥30°

Leftward and Rightward: ≥15°
Head board fold upward: ≥40°
Head board fold downward: ≥90°
Leg board fold downward: ≥90°
Leg of board split: ≥180°
Waist board lifting: ≥100mm
Main Voltage: AC220V 50Hz
Input Power: 300VA

Accessories:

A pair of shoulder support frame;
A pair of waist support frame;
A pair of arm resting frame;
A pair of leg support frame;
A screen frame;
A pair of pedal foot board;
A waistband.

>> GT602-216

Electrical Operation Table



Features:

- The bed surface adopts imported carbon plastic plate, the table can be moved vertically which can fulfill the needs of C type arm whole body examination.
- Various actions are controlled according to electric hydraulic working principle and by remote controller.
- Imported motor and solenoid valve.
- Electric braking device, convenient for shifting the operating table.

Technical Specification:

Length: 2000±50mm
Width: 500±20mm
Maximum and minimum height of the platform: ≥300mm
Back board fold upward: ≥60°
Back board fold downward: ≥20°
Forward: ≥20°
Backward: ≥30°

Leftward and Rightward: ≥15°
Head board fold upward: ≥40°
Head board fold downward: ≥90°
Leg board fold downward: ≥90°
Leg of board split: ≥180°
Waist board lifting: ≥100mm
Main Voltage: AC220V±10% 50Hz
Input Power: 400VA

Accessories:

A pair of shoulder support frame;
A pair of waist support frame;
A pair of arm resting frame;
A pair of leg support frame;
A screen frame;
A pair of pedal foot board;
A waistband.

Electrical Obstetric Bed



>> GT602-207

Multi-functional (Electric) Obstetric Table

Features:

- Imported brand motor various action are controlled by remote controller.
- The table, base seat and upright column covering are made of high quality 304 stainless steel which is anti-corrosive and can be easily cleaned.
- The mattress adopts high density memory sponge and is once formed, with no seam.
- Whole stainless steel hidden auxiliary table with flexible extension and retraction.
- Equipped with stainless steel sewage basin and other accessories.
- Foot treadle brake device which is easy for moving obstetric table.

Technical Specification:

Table length: 1900±50mm
Table width: 600±10mm
Maximum and minimum height of the platform: (700mm~950mm)±100mm
Length and width of auxiliary table
Length: 520mm
Width: 500mm
Back board fold upward: 60°
Forward: ≥10°
Backward: ≥12°
Main Voltage: AC220V 50Hz
Power: 150AV

Accessories:

A pair of arm resting frame;
A pair of leg support frame;
A pair of armrest;
A stainless steel sewage basin;
A hand-holding remote controller.

>> GT602-208

Gynecological Table



This type gynecological table is suitable for conducting gynecological surgery, operative abortion and gynecological examination, etc by medical unit.

Features:

- Unique profile design which is beautiful and elegant.
- Foot step hydraulic elevating and Various actions are controlled by pneumatic.
- Imported Y type sealing ring with good sealing performance and is durable.
- Whole stainless steel hidden auxiliary table with flexible extension and retraction.
- Foot treadle brake device which is easy for moving operating table.

Technical Specification:

Table length: 1330±50mm
Table width: 550±30mm
Auxiliary table: 340mm x 460mm (±20mm)
Back board fold upward: 75°
Forward inclining of the platform: ≥ 17°
Backward inclining of the platform: ≥ 17°
Back board fold upward: ≥ 70°
Table at the lowest level: ≤ 650mm
Table elevating stroke: ≥ 250mm
Auxiliary table stroke: ≥ 500mm

Accessories:

A pair of leg support frame;
A stainless steel sewage basin;
A pair of armrest.

>> GT602-209

Multi-functional (Electric) Obstetric Table



Technical Specification:

Table length: 1900±50mm
Table width: 600±20mm
Maximum and minimum height of the platform : (600mm~950mm)±150mm
Back board fold upward: 75°
Forward: ≥ 17°
Backward: ≥ 17°
Main Voltage: AC220V 50Hz
Power: 150AV
Horizontal lifting of the table: 400mm
Table load: 150kg

Features:

- Imported brand motor various action are controlled by remote controller.
- The table, base seat and upright column covering are made of high quality 304 stainless steel which is anti-corrosive and can be easily cleaned.
- The mattress adopts high density memory sponge and is once formed, with no seam.
- Whole stainless steel hidden auxiliary table with flexible extension and retraction.
- Equipped with stainless steel sewage basin and other accessories.
- Foot treadle brake device which is easy for moving obstetric table.

Accessories:

A pair of arm resting frame;
A pair of leg support frame;
A pair of armrest;
A stand for transfusion;
A stainless steel sewage basin;
A handle holding remote controller;
Pedal controller(optional).

Multi-Functional Operation Table



>> GT602-301 Multi-Functional Operation Table

GT602-301 series operation table features with integrated multi-function is suitable for various operations conducted by medical unit.



>> GT602-301E Multi-Functional Operation Table

>> GT602-301A Multi-Functional Operation Table



>> GT602-301B Multi-Functional Operation Table



>> GT602-301C Multi-Functional Operation Table



>> GT602-301D Multi-Functional Operation Table



Features:

- 301A type base seat and upright column covering are made of high quality 304 stainless steel, which is anti-corrosive and can be easily cleaned.
- 301B, table, base seat and upright column covering are made of high quality 304 stainless steel.
- 301D type base seat and upright column covering are made of high quality 304 stainless steel with double beds, which is anti-corrosive and can be easily cleaned.
- 301E type base seat and upright column covering are made of 304 stainless steel with double beds, split leg type.
- Imported Y type sealing ring with good sealing performance and is durable.
- Rotary brake device which is easy for moving operating table.
- All actions are controlled on both sides.

Note:

301, the table and base are made of high quality cold board which is treated by static spray.
301A, the base seat and upright column covering are made of high quality 304 stainless steel.
301B, the table, base seat and upright column covering are made of high quality 304 stainless steel.
301C, the base is mde of coldboard which is treated by static spray, split leg type and dischargeable.
301D, the base seat and upright column covering are made of high quality 304 stainless steel with double beds.
301E, the base seat and upright column covering are made of high quality 304 stainless steel with double beds, split leg type and dischargeable.

Technical Specification:

Length: 2100±50mm
Width: 480±20mm
Maximum and minimum height of the platform: (750mm~950mm)±50mm
Back board fold upward: ≥75°
Back board fold downward: ≥18°
Forward: ≥20°
Backward: ≥15°
Leftward and rightward: ≥18°
Head board fold upward: ≥45°
Head board fold downward: ≥90°
Leg board fold downward: ≥90°
Leg of the board split (301, 301E): ≥180°
Waist board lifting: ≥120mm

Accessories:

A pair of shoulder support frame;
A pair of waist support frame;
A pair of arm resting frame;
A pair of leg support frame;
A screen frame;
A pair of pedal foot board.

Multi-Functional Operation Table



>> GT602-308

Multi-Functional Operation Table

GT602-308 series operation table features with integrated multi-function is suitable for various operations conducted by medical unit.

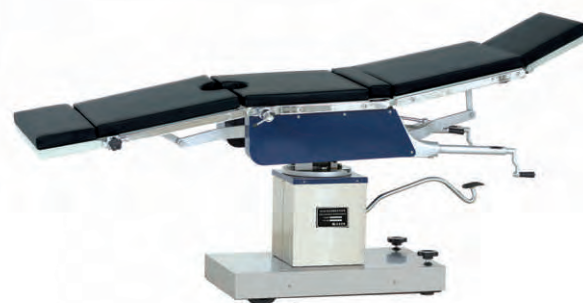


>> GT602-308D

Multi-Functional Operation Table

>> GT602-308A

Multi-Functional Operation Table



>> GT602-308B

Multi-Functional Operation Table



>> GT602-308C

Multi-Functional Operation Table



Features:

- 308A, 308B type base seat and upright column covering are made of high quality 304 stainless steel, which is anti-corrosive and can be easily cleaned.
- 308C, table, base seat and upright column covering are made of high quality 304 stainless steel with double beds, split leg type.
- 308D table, base seat and upright column covering are made of high quality 304 stainless steel.
- Imported Y type sealing ring, double security without oil-leakage.
- Rotary brake device which is easy for moving operating table.
- All actions are controlled on head position.

Technical Specification:

Length: 2050±50mm
Width: 480±20mm
Maximum and minimum height of the platform: (750mm~950mm)±50mm
Back board fold upward: ≥80°
Back board fold downward: ≥10°
Forward: ≥25°
Backward: ≥25°
Leftward and rightward: ≥20°
Head board fold upward: ≥45°
Head board fold downward: ≥90°
Leg board fold downward: ≥90°
Leg of the board split(308B): ≥180°
Leg of the board split(308C): ≥180°, dischargeable
Waist board lifting: ≥120mm

Accessories:

A pair of shoulder support frame;
A pair of waist support frame;
A pair of arm resting frame;
A pair of leg support frame;
A screen frame;
A pair of pedal foot board.

Note:

308, the table and base are made of cold board which is treated by static spray.
308A, the base seat and upright column covering are made of high quality 304 stainless steel.
308B, the base seat and upright column covering are made of high quality 304 stainless steel, split leg type.
308C, base seat and upright column covering are made of high quality 304 stainless steel with double beds, split leg type.
308D, table base seat and upright column covering are made of high quality 304 stainless steel.

Orthopedics Tractor Rack



>> GT602-401

Orthopedics Tractor Rack



Features:

GT602-401 orthopedics tractor rack can form a complete set for use with each kind of operating table, which is mainly used in the operation of leg. In the operation, by using this rack, the patient's leg can be performed side traction, prone traction and open-up position of the body. Combination with various types of supporting the use of the operating table.

Technical Specification:

Length: 1650±50mm
Width: 450±50mm
Maximum and minimum height: (700-1000) ±50mm
Traction travel: 0-140mm
Traction feet a horizontal arm cape: 0-180°

Chair-mounted Dental Unit

>> GT601-110

Chair-mounted Dental Unit



Standard Equipment:

24V DC motor for chair(synchronized) 1set, Auto spittoon flushing and cup filler control system 1set,9 Programs inter-lock control system 1set, Instrument tray with air break and rotatable handpiece holder 1set, Rotatable glass spittoon 1set, 3-way syringe(hot/cold) 2sets, Muti-function foot controller 1set, High suction and saliver ejector system 1set, Seamless cushion(foldable headrest) 1set, Water tank(outer) 1set,Build-in floor box with main switch 1set, LED operating light 1set, LED film viewer 1set.

Options:

Imported 4-hole high speed handpiece,
Imported 4-hole low speed handpiece,
Endoscope system, Curing light, Scaler,
Top-mounted instrument tray

Chair-mounted Dental Unit



>> GT601-111

Chair-mounted Dental Unit



Standard Equipment:

24V DC motor for chair(double armrest) 1set, Auto spittoon flushing and cup filler control system 1set, Control system(without memory) 1set, Instrument tray with air break(down-mounted) 1set, Build-in floor box with main switch(Moisture electric) 1set, Rotatable handpiece holder 1set, Glass spittoon 1set, Foldable headrest 1set, Seamless cushion(PU) 1set, Muti-function foot controller 1set, High suction and saliver ejector system 1set, Outer water tank 2sets, Imported medical water/gas pipe 1set, LED-1 operation light 1set, LED film viewer 1set, 3-way syringe(hot/cold) 2sets.

Optional Accessories:

Ceramic spittoon, Endoscope system, Outer floor box, Imported electro-motor, Imported/domestic 4 holes high speed handpiece, Imported/domestic 4 holes low speed handpiece, Imported/domestic curing light, Imported/domestic scaler, Central suction system, Oilless compressor.

X-RAY Machine



>> GT601-120

X-RAY Machine

Main Purpose and Features:

This X-ray apparatus features full-wave rectification and modular X-ray tube head. The frame of the unit, of cantilever construction, is compact in design easy of movement. The machine can be used for radiography in hospital wards or operating rooms.

Main Technical Data :

- Power requirements
Voltage: 180-240V Frequency: 50Hz
Internal resistance: $\leq 1\Omega$ Rating: 5.5Kv A
Current: Maimum15A for radiography
- Time: 0.063 to 2.5 steps electronic
- Maximum height from X-ray tube focus to floor>1720mm
- Minimum height from X-ray tube focus to floor<500mm
- Collimator: Maximum film size at 1000mm
Focal distance: 400×400mm
- Maxiumermote control distance: 6m
- X-ray tube focus: 216
- Unit moving force: $\leq 250N$
- Net weight of the unit: 95kg

Maximum ratings

Kv \ S mA	1.0	2.5	4.0	5.0
30	90	90	90	90
40	90	90	90	/
50	90	80	/	/

>> GT601-121

X-RAY Machine

Main Usage and Features:

This X-ray apparatus features fullwave rectification and modular X-ray tube head. The frame of the unit is of cantilever construction, and is compact in design and easy in movement. The machine can be used for Radiography in hospital wards or operating rooms.

Maximum ratings

Current(mA)	Voltage (kvp)	Exposure time(second)
30	90	0.063-5.0
50	90	0.063-1.0
50	80	0.063-4.0
70	70	0.063-1.0



Main Technical Data :

- Power requirements
Voltage: 180-240V Frequency: 50Hz
Internal resistance: $\leq 0.8\Omega$ Rating: 5.5Kv A
Current: Maimum15A for radiography
- Time: 0.063 to 5.0 steps electronic
- Maximum height from X-ray tube focus to floor>1720mm
- Minimum height from X-ray tube focus to floor<500mm
- Collimator:Maximum film size at 1000mm
Focal distance: 400×400mm
- Maxiumermote control distance: 6m
- X-ray tube focus: 216
- Unit moving force: $\leq 250N$
- Net weight of the unit: 95kg

X-RAY Machine



>> GT601-122

X-RAY Machine

Usage:

Take x-ray photography of the head, extremities, chest cavity and other parts of human.
Can be used in the ward or in operation room.

Main Features:

- Single focus, full-wave rectifier, combined X-ray generator.
- SCM control (easy to maintain and repair).
- High visual and operational console with LCD monitor.
- Prestore 8 kinds of photography parameters and select, modify, store the parameters under the condition of choice.
- Power voltage (V), photograph kilovolt (KV) infinitely variable control.
- Premier high voltage with high power SCR zero control circuit
- Function of load chains, exposure time control, auto alarm, preheat filament, subassemblies' temperature control, and so on.
- Cantilever structure makes the small volume and easily moving.

Focus of X-ray tube	Photograph Current (mA)	Max Photograph Voltage (kvp)	Max Allowable Exposure Time
Big Focus	16	90	6.3
	32	90	6.3
	63	90	4.0
	100	80	3.2

Main Technical Indexes:

- Power supply Voltage: 180-240 V Frequency: 50HZ Internal resistivity <1.0Ω Current 35A instant Rating ≥8Kv A
- Photography: Voltage: 50-90 Kv current 16ma. 32ma 63ma 100ma time 0.08s ~6.3s X-ray tube focus 4.3mm X4.3mm
- Maximum remote control distance: 7m
- Maximum height of focal spot from floor>1725-1775 mm Minimum height of focal spot from floor <480-535 mm
- Columns turning angle:±45
- Collimator: maximum film size at 1000mm focal distance: 400 mm X 400 mm
- The net weight of the unit: 150kg Gross Weight: 230kg
- Shipping volume: 150cm X 80cm X 150cm



>> GT601-123

X-RAY Machine

Usage:

General photography, ray-filter photography.

Main Features:

- Single focus, full-wave rectifier, combined X-ray generator
- SCM control (easy to maintain and repair)
- High visual and operational console with LCD monitor
- Prestore 8 kinds of photography parameters and select, modify, store the parameters under the condition of choice
- Power voltage (V), photograph kilovolt (KV) infinitely variable control
- Premier high voltage with high power SCR zero control circuit
- Function of load chains, exposure time control, auto alarm, preheat filament, subassemblies temperature control, and so on
- Cantilever structure makes the small volume and easily moving

Main Technical Indexes:

- Power supply Voltage: 180-240 V Frequency: 50HZ Internal resistivity <1.0Ω Current 35A instant Rating ≥10Kv A
- Photography: Voltage: 50-90 Kv current 15mA, 30mA, 60mA, 100mA time 0.04s~6.3s X-ray tube focus 4.3mm X4.3mm
- Maximum remote control distance: 7m
- Maximum height of focal spot from floor>1800 mm Minimum height of focal spot from floor <720 mm
- Collimator: maximum film size at 1000mm focal distance: 400 mm X 400 mm
- The net weight of the unit: 150kg gross Weight: 240kg
- Shipping volume: 150cm X 100cm X 150cm

Shadowless Operation Lamps



>> GT153-800L

Single-reflector Luminescence Lamp for Aurgical Operation

Illumination Lx	≥30000	Rated Voltage of Bulb	AC 24V
Color Temperature(K)	3500±500	Rated POWER of Bulb	25W
Color Rendering index(Ra)	100≥Ra≥85	Input power	60VA
Power Supply	AC 220 ±10%, 50Hz		



>> GT153-040B

AC/DC)Vertical 4-reflector Luminescence Shadowless Lamp

Illumination Lx	160000≥Ec≥40000	Rated Voltage of Bulb	AC 24V
Color Temperature(K)	4000±500	Rated POWER of Bulb	100W
Color Rendering index(Ra)	100≥Ra≥85	Input power	180VA
Power Supply	AC 220 ±10%, 50Hz, DC24V		



>> GT153-050L

Hoisted 5-reflector Luminescence Shadowless Lamp

Illumination Lx	160000≥Ec≥40000	Rated Voltage of Bulb	AC 24V
Color Temperature(K)	4000±500	Rated POWER of Bulb	125W
Color Rendering index(Ra)	100≥Ra≥85	Input power	150VA
Power Supply	AC 220 ±10%, 50Hz		



>> GT153-090L

9-reflector Shadowless Lamp

Illumination Lx	160000≥Ec≥90000	Rated Voltage of Bulb	AC 24V
Color Temperature(K)	4000±500	Rated POWER of Bulb	225W
Color Rendering index(Ra)	100≥Ra≥85	Input power	280VA
Power Supply	AC 220 ±10%, 50Hz		



>> GT153-120L

12-reflector Shadowless Lamp

Illumination Lx	160000≥Ec≥120000	Rated Voltage of Bulb	AC 24V
Color Temperature(K)	4000±500	Rated POWER of Bulb	300W
Color Rendering index(Ra)	100≥Ra≥85	Input power	350VA
Power Supply	AC 220 ±10%, 50Hz		



>> GT153-125L

Major & Auxliary Luminescence Shadowless Lamp

Illumination Lx	Main lamp 160000≥Ec≥1200000Lx Supple mentary lamp 160000≥Ec≥50000Lx		
Color Temperature(K)	4000±500	Rated Voltage of Bulb	AC 24V
Color Rendering index(Ra)	100≥Ra≥85	Rated POWER of Bulb	425W
Power Supply	AC 220 ±10%, 50Hz	Input power	500VA

Shadowless Operation Lamps



>> GT153-104 Shadowless Operation Lamps

Features:

Imported LED cold light source.
The white LED enhance the chromatic aberration between blood, other body tissues and organs, and it thus helps the operating doctor to have a clearer view.
The service life of LED shadowless lamp is long (50,000 h)

Technical Specification:

- Diameter of lighthouse: 78
- Diameter of spot D10(mm): 180±15
- Diameter of spot D50(mm): 100±15
- Color rendering index(Ra): 95
- Color temperature(K): 3500, 4000, 4500
- Working distance(cm): 70-150
- Power supply: 100-240V, 50/60HZ
- Max. power consumption(W): 150VA



>> GT153-107 Shadowless Operation Lamps

Features:

Imported LED cold light source.
The white LED enhance the chromatic aberration between blood, other body tissues and organs, and it thus helps the operating doctor to have a clearer view.
The service life of LED shadowless lamp is long (50,000 h)

Technical Specification:

- Diameter of lighthouse: 61
- Diameter of spot D10(mm): 180±15
- Diameter of spot D50(mm): 100±15
- Color rendering index(Ra): 95
- Color temperature(K): 4500±500
- Working distance(cm): 70-150
- Power supply: 100-240V, 50/60HZ
- Max. power consumption(W): 120VA

>> GT153-105 Shadowless Operation Lamps

Features:

Imported LED cold light source.
The white LED enhance the chromatic aberration between blood, other body tissues and organs, and it thus helps the operating doctor to have a clearer view.
The service life of LED shadowless lamp is long (50,000 h)

Technical Specification:

- Diameter of lighthouse: 61
- Diameter of spot D10(mm): 180±15
- Diameter of spot D50(mm): 100±15
- Color rendering index(Ra): 95
- Color temperature(K): 3500, 4000, 4500
- Working distance(cm): 70-150
- Power supply: 100-240V, 50/60HZ
- Max. power consumption(W): 120VA



>> GT153-106 Shadowless Operation Lamps

Features:

Imported LED cold light source.
The white LED enhance the chromatic aberration between blood, other body tissues and organs, and it thus helps the operating doctor to have a clearer view.
The service life of LED shadowless lamp is long (50,000 h)

Technical Specification:

- Diameter of lighthouse: 78
- Diameter of spot D10(mm): 180±15
- Diameter of spot D50(mm): 100±15
- Color rendering index(Ra): 95
- Color temperature(K): 4500±500
- Working distance(cm): 70-150
- Power supply: 100-240V, 50/60HZ
- Max. power consumption(W): 150VA



>> GT153-108 Shadowless Operation Lamps

Features:

Imported LED cold light source.
The white LED enhance the chromatic aberration between blood, other body tissues and organs, and it thus helps the operating doctor to have a clearer view.
The service life of LED shadowless lamp is long (50,000 h)

Technical Specification:

- Diameter of lighthouse: 61
- Diameter of spot D10(mm): 180±15
- Diameter of spot D50(mm): 100±15
- Color rendering index(Ra): 95
- Color temperature(K): 4500±500
- Working distance(cm): 70-150
- Power supply: 100-240V, 50/60HZ
- Max. power consumption(W): 120VA

>> GT153-109 Vertical Shadowless Lamps

Features:

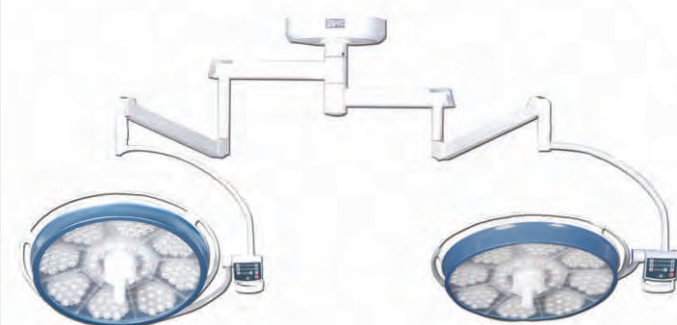
The LED shadowless lamp is pure-DC power supplied, without any strob or harmonic. The service life of LED shadowless lamp is long (35,000 h)

Technical Specification:

- Color rendering index(Ra): 100≥Ra≥85
- Color temperature(K): 3000≤Tc≤6700
- Power supply: 220 ±20%, 50Hz
- Max. power consumption(W): ≤100VA



Shadowless Operation Lamps



>> GT153-101 Shadowless Operation Lamps

Features:

Imported LED cold light source.
The white LED enhance the chromatic aberration between blood, other body tissues and organs, and it thus helps the operating doctor to have a clearer view.
The service life of LED shadowless lamp is long (50,000 h)

Technical Specification:

- Diameter of lighthouse: 78/78
- Diameter of spot D10(mm): 180±15
- Diameter of spot D50(mm): 100±15
- Color rendering index(Ra): 95
- Color temperature(K): 3500, 4000, 4500
- Working distance(cm): 70-150
- Power supply: 100-240V, 50/60HZ
- Max. power consumption(W): 300VA



>> GT153-700 III Shadowless Operation Lamps

Features:

The no welding titanium alloy main arm is adopted, so that the appearance is aesthetic and the rotation is more flexible and convenient

Technical Specification:

- | | |
|-----------------------------|-----------------|
| • Illumination Lx | 160000≥Ec≥80000 |
| • Color temperature(K) | 3000≤Tc≤6700 |
| • Color rendering index(Ra) | 100≥Ra≥85 |
| • Diameter of spot D10(mm) | 175±35 |
| • Diameter of lamp holder | 700 |
| • Bulb power(24V) | 150W |
| • Power supply | 220 ±20%, 50Hz |

>> GT153-102 Shadowless Operation Lamps

Features:

Imported LED cold light source.
The white LED enhance the chromatic aberration between blood, other body tissues and organs, and it thus helps the operating doctor to have a clearer view.
The service life of LED shadowless lamp is long (50,000 h)

Technical Specification:

- | | |
|------------------------------|-------------------|
| • Diameter of lighthouse: | 78/61 |
| • Diameter of spot D10(mm): | 180±15 |
| • Diameter of spot D50(mm): | 100±15 |
| • Color rendering index(Ra): | 95 |
| • Color temperature(K): | 3500, 4000, 4500 |
| • Working distance(cm): | 70-150 |
| • Power supply: | 100-240V, 50/60HZ |
| • Max. power consumption(W): | 270VA |



>> GT153-103 Shadowless Operation Lamps

Features:

Imported LED cold light source.
The white LED enhance the chromatic aberration between blood, other body tissues and organs, and it thus helps the operating doctor to have a clearer view.
The service life of LED shadowless lamp is long (50,000 h)

Technical Specification:

- | | |
|------------------------------|-------------------|
| • Diameter of lighthouse: | 61/61 |
| • Diameter of spot D10(mm): | 180±15 |
| • Diameter of spot D50(mm): | 100±15 |
| • Color rendering index(Ra): | 95 |
| • Color temperature(K): | 4500±500 |
| • Working distance(cm): | 70-150 |
| • Power supply: | 100-240V, 50/60HZ |
| • Max. power consumption(W): | 240VA |



>> GT153-700 IV Shadowless Operation Lamps

Features:

The no welding titanium alloy main arm is adopted, so that the appearance is aesthetic and the rotation is more flexible and convenient.

Technical Specification:

- | | |
|-----------------------------|-----------------|
| • Illumination Lx | 160000≥Ec≥80000 |
| • Color temperature(K) | 3000≤Tc≤6700 |
| • Color rendering index(Ra) | 100≥Ra≥85 |
| • Diameter of spot D10(mm) | 175±35 |
| • Diameter of lamp holder | 700 |
| • Bulb power(24V) | 150W |
| • Power supply | 220 ±20%, 50Hz |

>> GT153-500 III Shadowless Operation Lamps

GT153-500 III

- | |
|-----------------|
| 100000≥Ec≥50000 |
| 3000≤Tc≤6700 |
| 100≥Ra≥85 |
| 175±35 |
| 500 |
| 150W |
| 220 ±20%, 50Hz |

>> GT153-600 II Shadowless Operation Lamps

GT153-600 II

- | |
|-----------------|
| 120000≥Ec≥50000 |
| 3000≤Tc≤6700 |
| 100≥Ra≥85 |
| 175±35 |
| 600 |
| 150W |
| 220 ±20%, 50Hz |



Shadowless Operation Lamps



>> GT153-700/700 III Shadowless Operation Lamps

Features:

The no welding titanium alloy main arm is adopted, so that the appearance is aesthetic and the rotation is more flexible and convenient

Technical Specification:

- Illumination Lx 160000 \geq Ec \geq 80000
- Color temperature(K) 160000 \geq Ec \geq 80000
- 3000 \leq Tc \leq 6700
- Color rendering index(Ra) 100 \geq Ra \geq 85
- Diameter of spot D10(mm) 175 \pm 35/175 \pm 35
- Diameter of lamp holder 700/700
- Bulb power(24V) 150/150
- Power supply 220 \pm 20%, 50Hz



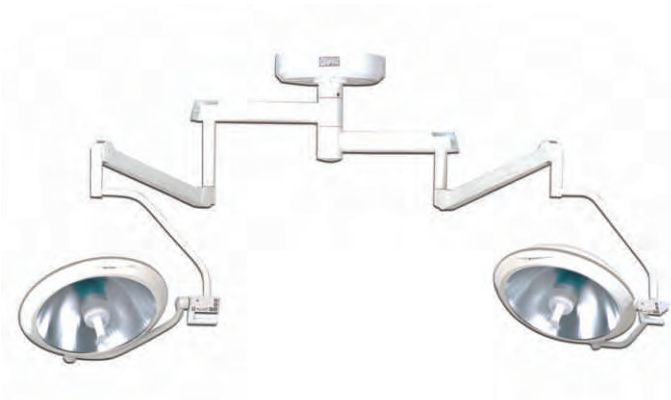
>> GT153-700/500 III Shadowless Operation Lamps

Features:

The no welding titanium alloy main arm is adopted, so that the appearance is aesthetic and the rotation is more flexible and convenient

Technical Specification:

- Illumination Lx 160000 \geq Ec \geq 80000
- Color temperature(K) 160000 \geq Ec \geq 50000
- 3000 \leq Tc \leq 6700
- Color rendering index(Ra) 100 \geq Ra \geq 85
- Diameter of spot D10(mm) 175 \pm 35
- Diameter of lamp holder 700/500
- Bulb power(24V) 150/150
- Power supply 220 \pm 20%, 50Hz



>> GT153-500/500 III Shadowless Operation Lamps

Features:

The no welding titanium alloy main arm is adopted, so that the appearance is aesthetic and the rotation is more flexible and convenient

Technical Specification:

- Illumination Lx 100000 \geq Ec \geq 50000
- Color temperature(K) 100000 \geq Ec \geq 50000
- 3000 \leq Tc \leq 6700
- Color rendering index(Ra) 100 \geq Ra \geq 85
- Diameter of spot D10(mm) 175 \pm 35
- Diameter of lamp holder 500/500
- Bulb power(24V) 150/150
- Power supply 220 \pm 20%, 50Hz

Ultrasound Scanner



>> GT603-311 Ultrasound Scanner



Keyboard



Convex probe



High frequency linear probe



Cardiac probe



Trans-vaginal probe

Main technical features:

Monitor: 10 inch Scanning mode: B、B+B、B+M、M、4B
Image gray scale: 256 TCG adjustment: 8 segments
Depth adjustment: 40mm-240mm Storage: U plate
Dynamic range: 100 dB Focus adjusting: available
Cine loop: 512 Partial zoom: 2.0 (real time and frozen)
Depth promote: In B、B+B mode Reversal: Up/down, left/right
Measurement & calculation: distance, area, circumference, heart rate depth and valve speed.
Obstetric checking software: for BPD; FL; CRL; GS; HC; AC; fetus weight, delivering date, pregnancy time.
Display info: Patient information input: date and registration code display, full screen wording function.
Body marks: 60 USB port: available
Power consumption: < 150VA

Configuration:

3.5MHz (80 elements, R=50mm) Convex probe

Options:

- 7.5 MHz (80 elements) High frequency linear probe
- 3.5 MHz (80 elements, R=20mm) Cardiac probe
- 6.5 MHz (80 elements, R=11mm) Trans-vaginal probe
- Trolley
- LCD monitor
- MITSUBISHI P93C Thermal Printer

>> GT603-312 Ultrasound Scanner

Features:

10.1"high-resolution TFT LCD
At 1.5KG
Probe Frequency:2.5MHZ-10.0MHZ(Depend on the probe types)
Probe connector:1
Continuous dynamic variable aperture, Continuous dynamic focusing, wide band pre-amplification, log compression, TGC control, dynamic filtering, edge enhancement and frame correlation, ETC.

Display mode: B,B/B,4B,B/M,M
Scanning methods: Electronic Convex/ Electronic linear
Image reversing: Up/down, left/right, Black/White
Depth upgrade, zoom and scroll control, Overall gain, brightness, contrast control.
Cine loop:256 frames, playback selectable, can be saved in USB disk or SD card and recalled for analysis.
General measurement: distance, volume, circumference, area/perimeter, angle, heart rate, fetus weight, pregnancy week, etc.
More than forty difference body marks
Image displayed with comments of date, time, scanning depth, probe type, parameter of frame correlation, focus combination, patient ID, age, sex and hospital information.



Preset: time, date, hospital name, fetal weight formula, image format, etc.
USB 2.0 interface ensures real-time image transfer to PC.
Support USB mouse operation.
Report page print.

Probes for human:

Convex probe, Trans-vaginal probe, Linear probe, Cardiac probe.

Ultrasound Scanner



GT603-313

Ultrasound Scanner

Features:

Cutting-edge Digital Technology
DBF Digital Beam-forming
DFS Numerical control Dynamic frequency scanning
DRF Dynamic receiving focusing
RDA Real-time dynamic aperture
TDF Time and Dimensional filtration
Real-time dynamic apodization
8-segment TGC adjustor
Built-in high-speed MPU
English-Chinese interface
Extensive Software Packages
USB Port

Configuration:

- Convex Probe (80element)
- Cine Loop
- 2 USB Ports
- High resolution 14 inch VGA Monitor
- B, 4B, B/B B/M, M

Option:

- Trans-vaginal Probe (80 element)
- Vedio printer
- 15' LED color monitor
- Cardiac probe
- High Frequency probe

GT603-314

Ultrasound Scanner

Technical Specification:

Displaying mode: B, 2B, 4B, B/M, M
B/C, B/C/C, B/D, CFM, PRF, PW, velocity,
power dirction, histogram
Triplex/Duplex.

Imaging Processing Technology:

Imaging optimization technology,
Compound enhance technology
Muti beam parallel processing technology
Itouch
Tissue Harmonic Imaging
Probe: Electronic convex, linear, trans-vaginal
Wide band multi frequency.

Standard Configuration:

Main Unit, 3.5MHZ convex probe, 15"LCD,
2 probe connectors, Hard Disk(500G), 2USB port.

Options:

3.5MHZ cardiology probe,6.5MHZ Trans-vaginal probe, 7.5MHZ linear probe, 3.5MHZ volume probe, DICOM 3.0,
Trolley, Video printer, Laser printer.



Suction Machine



GT620-102

Suction Machine

Mains: AC 220V±10% 50Hz
Pump Structure: oil-free pump
Negative Pressure: ≥0.08MPa
Air Pumping Efficiency: ≥15L/min
Adjustment Range of
Negative Pressure: 0.013~0.08 MPa
Input Power: 150VA
Noise Level: ≤50dB
Liquid Vessel: 1000ml



GT620-118

Suction Machine

Technical Specification:

- Mains:
- Pump Structure:
- Negative Pressure:
- Air Pumping Efficiency:
- Adjustment Range of Negative Pressure:
- Input Power:
- Noise Level:
- Liquid Vessel:



GT620-109

Suction Machine (mobile setup)

GT620-118

AC 220V±10% 50Hz
oil-free pump
≥0.07MPa
≥15L/min

0.013~0.07 MPa
150VA
≤55dB
1000ml

GT620-109

AC 220V±10% 50Hz
imported film type pump
≥0.09MPa
≥25L/min(35L pump suitable)

0.013~0.09 MPa
400VA
≤55dB
2500mlx2



GT620-122

Suction Machine (plastic cover)

GT620-122

AC 220V±10% 50Hz
imported film type pump
≥0.09MPa
≥25L/min(35L pump suitable)

0.013~0.09 MPa
150VA
≤55dB
2500mlx2

Suction Machine



>> GT620-120 Suction Machine

Mains: AC 220V±10% 50Hz
 Pump Structure: imported film type pump
 Negative Pressure: ≥0.09MPa
 Air Pumping Efficiency: ≥25L/min
 Adjustment Range of Negative Pressure: 0.013~0.09 MPa
 Input Power: 150VA
 Noise Level: ≤55dB
 Liquid Vessel: 2500mlx2



>> GT620-105 Suction Machine (portable)

Technical Specification:

- Mains:
- Pump Structure:
- Negative Pressure:
- Air Pumping Efficiency:
- Adjustment Range of Negative Pressure:
- Input Power:
- Noise Level:
- Liquid Vessel:



>> GT620-106 Suction Machine (AC/DC)

GT620-105
 AC 220V±10% 50Hz
 oil-free pump
 ≥0.09MPa
 ≥25L/min
 0.013~0.09 MPa
 150VA
 ≤50dB
 1000mlx2

GT620-106
 AC 220V±10% 50Hz DC12V
 oil-free pump
 ≥0.09MPa
 ≥20L/min
 0.013~0.09 MPa
 150VA
 ≤50dB
 1000ml



>> GT620-113 Suction Machine (portable)

GT620-113
 AC 220V±10% 50Hz
 oil-free pump
 ≥0.09MPa
 ≥25L/min
 0.013~0.09 MPa
 150VA
 ≤50dB
 1000mlx2

Stomach Cleaning Machine



>> GT620-201 Stomach Cleaning Machine

Mains: AC 220V±10% 50Hz
 Pump Structure: Impulse pump
 Negative Pressure: 2L/min in rushing;
 2L/min in suction
 Input Power: 100VA
 Noise Level: ≤55dB±25%
 Liquid Vessel: 5000mlx2
 Mode of stomach cleaning: Manual,
 Auto(auto-suction time adjustable)

>> GT620-203 Stomach Cleaning Machine

Mains: AC 220V±10% 50Hz ±1 Hz
 Pump Structure: oil-free diaphragm pump
 Washing capacity: <500ml each time
 Suction capacity: <600ml each time
 Pressure for stomach cleaning: -0.05Mpa ~ +0.05Mpa
 Frequency of stomach cleaning: ≤20s
 Input Power: 80VA ±25%
 Noise Level: ≤55dB



>> GT620-204 Stomach Cleaning Machine

Mains: AC 220V±10% 50Hz ±1 Hz
 Pump Structure: oil-free diaphragm pump
 Washing capacity: <500ml each time
 Suction capacity: <600ml each time
 Pressure for stomach cleaning: -0.05Mpa ~ +0.05Mpa
 Frequency of stomach cleaning: ≤20s
 Input Power: 80VA ±25%
 Noise Level: ≤55dB



Hospital Bed



ICU



- » **GT501-537**
Hospital Bed
7 Function electric bed
4 Section PP guard rail
Powder coating steel frame
Removable ABS head and food bed board
Central locking castors
Pedal control system
Size: 219x109x63cm



- » **GT501-540**
Hospital Bed
4 Section ABS guard rail
Powder coating steel frame
Central locking ABS castors
Digital weight function
Pedal control system
Size: 217x104x50cm



- » **GT501-541**
Hospital Bed
ABS side rails
Powder coating mild steel frame
Central control locking castors
Size: 217x103x45cm



- » **GT501-542**
Hospital Bed
Folding steel Guadrails
Detachable ABS bed panel
Powder coating mild steel frame
Pedal locking castors
Manual and electrical elevating system
Size: 205x96x43cm

Hospital Bed



>> GT501-306
Hospital Bed
 Electric three functions, Metal net panel
 Aluminum removable guard rails
 Powder coating mild steel frame
 Central control locking castors
 Electric lifting system with CE,UL approval
 Detachable ABS head and food bed-board
 Size: 210x102x51cm



>> GT501-548
Hospital Bed
 Wooden bed panel & guardrails
 Powder coating mild steel frame
 Pedal locking castors
 Size: 209x96x44cm



>> GT501-546
Hospital Bed
 Removable flip down ABS Guardrails
 Electric two functions ABS bed panel
 Powder coating mild steel frame
 Pedal locking castors
 Size: 209x95x47cm



>> GT501-303
Hospital Bed
 Electric two functions, metal net panel
 Detachable ABS head and foot bed-boards
 Aluminum removable guardrails
 Powder coating steel frame
 Pedal locking castors
 Size: 209x102x28cm



>> GT501-547
Hospital Bed
 5 Function electric bed
 Aluminum frame and platform
 Wooden head and food bed board
 Aluminum foldable guard rail
 2" Lockable castor
 Size: 209x90x33cm



>> GT501-549
Hospital Bed
 Electric three functions, Metal flat bed panel
 Wooden head and food bed-boards
 Folding aluminum guardrail
 Powder coating steel frame
 Pedal locking castors
 Size: 209x96x49cm



>> GT501-304
Hospital Bed
 Electric two functions, metal net panel
 Wooden head and food bed-boards
 Detachable guardrails
 Powder coating steel frame
 Size: 209x96x28cm

>> GT501-307
Hospital Bed
 Electric three functions, Metal flat bed panel
 Wooden head and food bed-boards
 Aluminum removable guardrails
 Powder coating steel frame
 Pedal locking castors
 Double motor lifting system
 Size: 213x101x34cm



Hospital Bed



>> GT501-550

Fysiocouch

Length:200cm
Dynamic max load:200kg
Static max load:250kg
Adjustable height from 46cm to 95cm raised by actuator system
Three main pillows supported and angle-adjusted by gas springs
Armrests height and direction adjustable(optional parts)
Wheel lifting(central wheel lift, dual wheel lift)
Size: 174x75x60cm



>> GT501-554

Hospital Bed

Two functions,metal net panel
Aluminum removable guardrails
Powder coating mild steel frame
Pedal locking castors
Size: 209x102x28cm



>> GT501-551

Fysiocouch

Length:210cm
Dynamic max load:200kg
Static max load:250kg
Adjustable height from 46cm to 95cm raised by actuator system
Two main pillows supported and angle-adjusted by gas springs
Wheel lifting(central wheel lift, dual wheel lift)
Size: 214x75x60cm



>> GT501-102

Manual Stainless Steel Bed

Two functions,stainless steel frame
Stainless steel head and food bed-boards
Detachable guardrails
Double handle knobs



>> GT501-555

Hospital Bed

One functions manual bed
Powder coating steel frame
Removable ABS head and food bed board
Foldable aluminum guard rail
5"Castor with lock
Size: 209x102x28cm



>> GT501-537

Hospital Bed

Material: Steel Framework,
ABS & PP for Plastic Part
Dimension: 2200mm(L) x1050mm(W) x 590mm-680mm
Bed Board: 1950mm x900mm
Castor: 150mm Swivel (Central Locking)
Features: 5 functions mechanical bed with cranking system
Backrest (0-70°), Footrest (0-40°)
Hi-Low(680mm-590mm)
Trendelenburg (10°) & Rev. Trendelenburg (10°)
all achieved by manually operated.



>> GT501-552

Steel Standard Bed

Metal flat board
Powder coating steel frame



>> GT501-553

Hospital Bed

Two functions manual bed
Metal flat panel,powder coating steel frame,
removable head and food bed-boards
Aluminum foldable guard rail
5"Castor with lock
Size: 224x102x32cm

>> GT501-535

Hospital Bed

Multi-functions electric bed
Oversize: 2200mm(L) x 1050mm(W) x 510mm-710mm
Bed Board: 1945mm x 900mm
Backrest (0-70°), Foot-rest (0-40°)
Hi-low(710mm-510mm), Trendelenburg(12°)
&Rev Trendelenburg (12°)
Reset function,bed could back to "Zero"position quickly.



Hospital Bed



>> GT501-538

Hospital Bed

Material: Steel framework, ABS & PP for plastic part.
 Dimension: 2080mm(L) x 980mm(W) x 475mm (Height fixed)
 BED BOARD: 1910mm x 830mm
 Net Weight: 65kg
 Load Capacity: < 250kg
 Features: 5 functions mechanical bed with cranking system
 Backrest (0-70°), Footrest (0-40°)
 Hi-Low(680mm-590mm)
 Trendelenburg (10°) & Rev. Trendelenburg (10°)
 all achieved by manually operated.



>> GT501-317

Hospital Bed

Dimension: 2155mm(L)x1050mm(W) x 430mm-640mm
 Detachable PP plastic head&foot board, powder coated steel bed board with ventilated holes 4pcs 125cm
 central-control system castors
 Three-functions, three motors.
 Functions controlled by remote control
 Hi-low: 640mm-430mm
 Back-rest lifting angle: 0-75°
 Knee-rest lifting angle: 0-35°
 Standard accessory: I.V.pole

>> GT501-316

Hospital Bed

Three functions: backrest, kneepart the height of whole bed are adjustable
 Aluminum alloy protective railing
 PE head&foot board (2pcs)
 2Pcs castors without locking brake
 Stainless frame, easy to move and clean
 Left and right leg parts position can be raised up by cranks, convenient for treatment and use



>> GT501-539

Hospital Bed

Dimension: 2200mm(L)x1050mm(W)x510mm-710mm
 Bed Board: 1945mm x 900mm
 Backrest (0-70°) Footrest (0-40°)
 Hi-Low(710mm-510mm)
 Trendelenburg (12°) & Rev. Trendelenburg (12°)
 all achieved by electrically controlled, with indicator light to show the work status.
 "Reset" function, bed could back to "Zero" position quickly.



>> GT501-543

Hospital Bed

Dimension: 2230mm(L)x970mm(W)x465mm-670mm
 Bed board: 1930mm x 900mm
 Equip with one hand held remote control, for patient adjust bed position easily
 Backrest (0-70°) Footrest (0-40°) Hi-Low(670mm-465mm)
 all achieved by electrically controlled



>> GT501-544

Hospital Bed

Multi-functions electric bed
 Oversize: 2330mm(L) x 1050mm(W) x 530mm-710mm
 Bed Board: 1955mm x 900mm
 Backrest (0-65°), Foot-rest (0-43°)
 Hi-Low(710mm-530mm)
 Trendelenburg (10°) & Rev. Trendelenburg(10°)
 all achieved by electrically controlled, with indicator light to show the work status.

>> GT501-545

Hospital Bed

Five functions electric bed
 Oversize: 2330mm(L) x 1050mm(W) x 530mm-710mm
 Bed Board: 1955mm x 900mm
 Backrest (0-65°), Foot-rest (0-43°)
 Hi-Low(710mm-530mm)
 Trendelenburg (10°) & Rev. Trendelenburg(10°)
 all achieved by electrically controlled, with indicator light to show the work status.
 "Reset" function, bed could back to "Zero" position quickly.



Baby Bed



>> GT505-001
Stainless Steel Baby Bed
Specification: 1600x800x700mm



>> GT505-002
Stainless Steel Double-rocker Baby Bed
Specification: 1600x800x700mm/1370mm



>> GT505-003
Baby Bed
Specification: 800x410x920mm



>> GTGT505-004
Stainless Steel Double-rocker Baby Bed
Specification: 730x450x610mm/960mm



>> GT505-005
Baby Bed
Specification: 820x460x650/900mm



>> GT505-006
Baby Bed
Specification: 820x460x750/1000mm



>> GT505-007
Luxury Baby Bed
Specification: 660x480x780/980mm

Bedside Cabinet



>> GT502-105N
Bedside Cabinet
Material: metal frame, ABS components



>> GT502-101N
Bedside Cabinet
Material: ABS



>> GT502-102N
Bedside Cabinet
Material: ABS



>> GT502-103N
Bedside Cabinet
Material: ABS



>> GT502-106N
Bedside Cabinet
Material: ABS



>> GT502-107N
Bedside Cabinet
Material: ABS



» GT550-101 Infant Incubator

Brief Introduction:

- Two temperature control modes: air mode and baby mode controlled by micro-computer.
- Use AC Power and DC Power alternatively, DC 12V or DC 24V Power on the ambulance.
- Set temperature, air temperature, baby temperature and internal battery voltage can be displayed separately.
- Failure alarm indication.
- Can be equipped with >37°C temperature set function.
- Double wall Acrylic glass hood with side door so that the bassinet can be pulled out from it.
- Natural air flow humidity.
- The height of whole unit can be adjusted.
- Oxygen supply system.
- Observation lamp.

Standard Configuration:

Main body (including the Acrylic glass hood, temperature controller, bassinet, internal battery, and observation lamp), oxygen cylinders oxygen supply system, skin temperature sensor, I.V. Pole, mattress, adjustable stand).

Optional configuration: >37°C override temperature mode.

Requirements of Environment

Environment temperature: 10 °C~30°C.
(Set temperature should be higher 3°C than the environment temperature).
Wind speed of environment: ≤1.0m/s.

Specification

- AC Power supply: AC220V-230V, 50Hz.
- DC Power supply: DC12V/10A or DC24V/6A.
- Input power: 400VA.
- Mode of control: Air mode and baby mode controlled by micro-computer.
- Control range of air temperature: 25°C-37°C (Override mode 37°C-38°C).
- Control range of baby temperature: 34°C-37°C (Override mode 37°C-37.5°C).
- Accuracy of skin temperature sensor: ≤0.3°C.
- Variability of temperature: ≤1.0°C.
- Uniformity of temperature: ≤1.5°C.
- Noise inside hood: ≤60dB(A).
- Failure alarm: over-temperature alarm, temperature deviation alarm, sensor alarm, motor fan failed alarm, power failure alarm and so on.
- Running time of internal battery: 90min. (1 internal battery).

Package

Package: each unit is packed as two cartons
Size (Main body): 109mm x 65.5mm x 76mm.
(Cabinet): 138mm x 61mm x 40mm.
Gross Weight (Main body): 80Kg.
(Cabinet): 53Kg.



» GT550-107/107B Infant Incubator

Brief Introduction:

- Air mode control, set temperature and air temperature are displayed separately.
- Natural air flow humidity.
- Inclination of bassinet is adjustable.
- Failure alarm indication.
- RS-232 connector.
- GT550-107B is configured with fixed Neonate Bilirubin Phototherapy Equipment model (with blue fluorescence lamps).
- GT550-107B is configured with fixed Neonate Bilirubin Phototherapy Equipment model (with LED blue lights).

Standard Configuration:

GT550-107: Main body, mobile cabinet, temperature controller, baby compartment, I.V. pole, shelf.

GT550-107B: Based on GT550-107, with Neonate bilirubin phototherapy equipment (fixed model).

Optional parts: > 37°C temperature Override Mode function, Vertical Height Adjustment Stand(VHA Stand).

Requirements of Environment

Environment temperature: 20 °C~30°C.
(Set temperature should be higher 3°C than the environment temperature).
Wind speed of environment: ≤0.3m/s.



Package

Package: each unit is packed as one carton
Size: 108.5mm x 64mm x 112.5mm
Gross Weight: 80Kg (for YP-90)
90Kg (for YP-90B)



GT550-100

GT550-100B

>> GT550-100/100B/108A/108B Infant Incubator

Brief Introduction:

- Air mode control, set temperature and air temperature are displayed separately.
- Natural air flow humidity.
- Failure alarm indication.
- RS-232 connector.
- GT550-100B, GT550-100AB are configured with fixed
- Neonate Bilirubin Phototherapy Equipment with blue fluorescence lamps).
- GT550-100B, GT550-100AB are configured with fixed
- Neonate Bilirubin Phototherapy Equipment (with LED blue lights).

Standard Configuration:

GT550-100: Main body, stand, temperature controller, baby compartment, I.V. Pole, shelf and so on.

GT550-108A: Based on GT550-100, added with the side door.

GT550-108B: Based on GT550-100, added with the Neonate bilirubin phototherapy equipment (fixed model).

Specification

- Power supply: AC220V-230V, 50Hz.
- Input power: 850VA.
- Mode of control: Air mode control by micro-computer.
- Control range of air temperature: 25°C-37°C.
- Variability of temperature: $\leq 0.5^{\circ}\text{C}$.
- Uniformity of temperature: $\leq 0.8^{\circ}\text{C}$.
- Noise inside hood: $\leq 60\text{dB(A)}$.
- Failure alarm: over temperature alarm, deviation alarm, sensor failure alarm, fan motor alarm, power failure alarm, system alarm and so on.



GT550-108A

GT550-108B

Requirements of Environment

Environment temperature: 20 °C~30°C.
(Set temperature should be higher 3°C than the environment temperature).
Wind speed of environment: $\leq 0.3\text{m/s}$.

Package

Package: each unit is packed as one carton
Size: 108.5mm x 64mm x 108mm
(GT550-100/GT550-108B)
108.5mm x 64mm x 112.5mm (GT550-108A)
Gross Weight: 72Kg (for GT550-100/GT550-108A)
83Kg (for GT550-108B)



>> GT550-109A/109B Infant Incubator

Brief Introduction:

- Two control modes: Air mode and baby mode controlled by micro-computer.
- Set temperature, air temperature, baby temperature are displayed separately.
- Natural air flow humidity.
- Inclination of bassinet is adjustable.
- Failure alarm indication.
- RS-232 connector.
- GT550-109B is configured with fixed Neonate Bilirubin Phototherapy Equipment (with blue fluorescence lamps).
- GT550-109B is configured with fixed Neonate Bilirubin Phototherapy Equipment model (with LED blue lights).

Standard Configuration:

GT550-109A: Main body, mobile cabinet, temperature controller, baby compartment, I.V. pole, shelf.

GT550-109B: Based on GT550-109A, with Neonate bilirubin phototherapy equipment (fixed model).

Optional parts: > 37°C temperature Override Mode function, Vertical Height Adjustment Stand(VHA Stand).

Specification

- Power supply: AC220V-230V, 50Hz.
- Input power: 850VA.
- Mode of control: Air mode and baby mode controlled by micro-computer.
- Control range of air temperature: 25°C-37°C (override mode: 37-39°C).
- Control range of baby temperature: 34-37°C (override mode: 37-38°C).
- Accuracy of skin temperature sensor: $\leq 0.3^{\circ}\text{C}$.
- Variability of temperature: $\leq 0.5^{\circ}\text{C}$.
- Uniformity of temperature: $\leq 0.8^{\circ}\text{C}$ (mattress is on the horizontal position).
- Inclination of the bassinet: $\pm 12^{\circ}$.
- Noise inside hood: $\leq 60\text{dB(A)}$.
- Failure alarm: over temperature alarm, deviation alarm, sensor failure alarm, fan motor alarm, power failure alarm, system alarm and so on.



Requirements of Environment

Environment temperature: 20 °C~30°C.
(Set temperature should be higher 3°C than the environment temperature).
Wind speed of environment: $\leq 0.3\text{m/s}$.

Package

Package: each unit is packed as two cartons
Size (Main body): 108.5mm x 64mm x 91.5mm
(Cabinet): 112.5mm x 66.5mm x 73mm
Gross Weight(Main body):63Kg(for GT550-109A)
75Kg(for GT550-109B)
(Cabinet):68Kg



» GT550-106/105 Infant Incubator



Brief Introduction:

- Two control modes: Air mode and baby mode controlled by micro-computer.
- Humidity concentration display function (for GT550-106)
- Humidity concentration servo control (for GT550-105).
- Set temperature, air temperature, baby temperature, humidity concentration are displayed separately.
- >37°C temperature set function.
- Failure alarm indication.
- Embedded integrated sensor box.
- Integrated water reservoir in the shape of drawer (for GT550-105).
- Double wall Acrylic glass hood, automatic air circulation device.
- Inclination of bassinet is adjustable.
- RS-232 connector.

Standard Configuration:

GT550-106: Main body (including the Acrylic glad hood, temperature controller, bassinet), skin temperature sensor, I.V. pole, mattress, guard rail, mobile cabinet.

GT550-105: Based on GT550-106, with Humidity servo control.

Specification

- Power supply: AC220V-230V, 50Hz.
- Input power: 850VA (GT550-106)
1000VA (GT550-105).
- Mode of control: Air mode and baby mode controlled by micro-computer.
- Control range of air temperature: 25°C-37°C(override mode 37-39°C).
- Control range of baby temperature: 34-37°C(override mode 37-38°C).
- Accuracy of skin temperature sensor: $\leq 0.3^{\circ}\text{C}$.
- Variability of temperature: $\leq 0.5^{\circ}\text{C}$.
- Uniformity of temperature: $\leq 0.8^{\circ}\text{C}$ (mattress is on the horizontal position).
- Inclination of the bassinet: $\pm 12^{\circ}$.
- Noise inside hood: $\leq 60\text{dB(A)}$.
- Failure alarm: over temperature alarm, deviation alarm, sensor failure alarm, fan motor alarm, power failure alarm, sensor box position alarm and system alarm. (GT550-105 has low water alarm and tank position error alarm).
- Indication range of humidity: 0%RH~99%RH.
- Control range of humidity: 0%RH~90%RH (for GT550-105).
- Accuracy of humidity: $\pm 10\%$ RH.

Optional Configurations:

Fixed Neonate bilirubin phototherapy equipment (with blue fluorescence lamps)
Fixed Neonate bilirubin phototherapy equipment (with LED blue lights)
Vertical Height Adjustment Stand (VHA Stand)
Weighing System

Requirements of Environment

Environment temperature: 20 °C~30°C.
(Set temperature should be higher 3°C than the environment temperature).
Wind speed of environment: $\leq 0.3\text{m/s}$.

Package

Package: each unit is packed as two cartons
Size (Main body): 108.5mm x 64mm x 91.5mm
(Cabinet): 112.5mm x 66.5mm x 73mm
Gross Weight (Main body): 63Kg (for GT550-106)
66Kg (for GT550-105)
(Cabinet): 68Kg



» GT550-102 Infant Incubator



Brief Introduction:

- Two control modes: Air mode and baby mode controlled by micro-computer.
- The information can be stored, consulted and indicated by the LCD display screen.
- Humidity and oxygen concentration display and servo control.
- The air circle with outlet in both front and back.
- >37°Ctemperature set function.
- Acrylic glass hood, air circulation system in the way of air outlet from front and back.
- X-ray cassette under the bassinet.
- Embedded integrated sensor module, integrated water reservoir in the shape of drawer.
- Inclination of bassinet is adjustable.
- The height of whole unit can be adjusted.
- Failure alarm indication.
- RS-232 connector.

Standard Configuration:

Baby compartment, main body, vertical height adjustment stand (VHA stand), Oxygen concentration servo control system, temperature controller, I.V. Pole and shelf.
Optional: Weighing system and monitor shelf.

Requirements of Environment

Environment temperature: 20 °C~30°C.
(Set temperature should be higher 3°C than the environment temperature).
Wind speed of environment: $\leq 0.3\text{m/s}$.

Specification

- Power supply: AC220V-230V, 50Hz.
- Input power: 1300VA.
- Mode of control: Air mode and baby mode controlled by micro-computer.
- Control range of air temperature: 25°C-37°C (override mode 37-39°C)
- Control range of baby temperature: 34-37°C (override mode 37-38°C)
- Accuracy of skin temperature sensor: $\leq 0.3^{\circ}\text{C}$.
- Variability of temperature: $\leq 0.5^{\circ}\text{C}$.
- Uniformity of temperature: $\leq 0.8^{\circ}\text{C}$ (mattress is on the horizontal position).
- Inclination of the bassinet: $\pm 8^{\circ}$.
- Noise inside hood: $\leq 55\text{dB(A)}$.
- Failure alarm: over-temperature alarm, temperature deviation alarm, sensor alarm, motor fan failed alarm, power failure alarm and so on.
- Indication range of humidity: 0%RH~99%RH.
- Control range of humidity: 0%RH~90%RH.
- Accuracy of humidity: $\pm 6\%$ RH.
- Indication range of oxygen concentration: 0%~99%.
- Control range of oxygen concentration: 20%~60%.
- Accuracy of oxygen concentration: $\pm 3\%$.
- Range of weigh: 100-8000g.
- Resolution for weight indication: 1g.
- Accuracy of weight: $\pm 1\%$.

Package

Package: each unit is packed as two cartons
Size (Main body): 111mm x 71mm x 88.8mm.
(Cabinet): 103mm x 70mm x 83mm.
Gross Weight (Main body): 70Kg.
(Cabinet): 80Kg.





» GT550-104/103 Infant Incubator



Brief Introduction:

- Two control modes: Air mode and baby mode controlled by micro-computer.
- Humidity concentration servo control function and oxygen concentration display function.
- Humidity concentration and oxygen concentration servo control function (for GT550-103).
- Set temperature, air temperature, baby temperature, humidity concentration are displayed separately.
- >37°C temperature set function.
- Failure alarm indication.
- Embedded integrated sensor box.
- Integrated water reservoir in the shape of drawer.
- Double wall Acrylic glass hood, automatic air circulation device.
- Inclination of bassinet is adjustable.
- RS-232 connector.

Standard Configuration:

GT550-104: Main body (including the Acrylic glad hood, temperature controller, bassinet), skin temperature sensor, I.V. pole, mattress, guard rail, mobile cabinet.

GT550-103: Based on GT550-104, with Humidity servo control.

Specification

- Power supply: AC220V-230V, 50Hz
- Input power: 1000VA
- Mode of control: Air mode and baby mode controlled by micro-computer
- Control range of air temperature: 25°C-37°C(override mode 37-39°C)
- Control range of baby temperature: 34-37°C(override mode 37-38°C)
- Accuracy of skin temperature sensor: ≤0.3°C
- Variability of temperature: ≤0.5°C
- Uniformity of temperature: ≤0.8°C(mattress is on the horizontal position)
- Inclination of the bassinet: ±12°
- Noise inside hood: ≤60dB(A)
- Failure alarm: over temperature alarm, deviation alarm, sensor failure alarm, fan motor alarm, power failure alarm, sensor box position alarm, low water alarm, tank position error alarm and system alarm.
- Indication range of humidity: 0%RH~99%RH
- Control range of humidity: 0%RH~90%RH
- Accuracy of humidity: ±10%RH
- Indication range of oxygen concentration: 0%~99%
- Control range of oxygen concentration: 20%~60% (for GT550-103)
- Accuracy of oxygen concentration: ±3%

Optional Configurations:

Fixed Neonate bilirubin phototherapy equipment (with blue fluorescence lamps)

Fixed Neonate bilirubin phototherapy equipment (with LED blue lights)

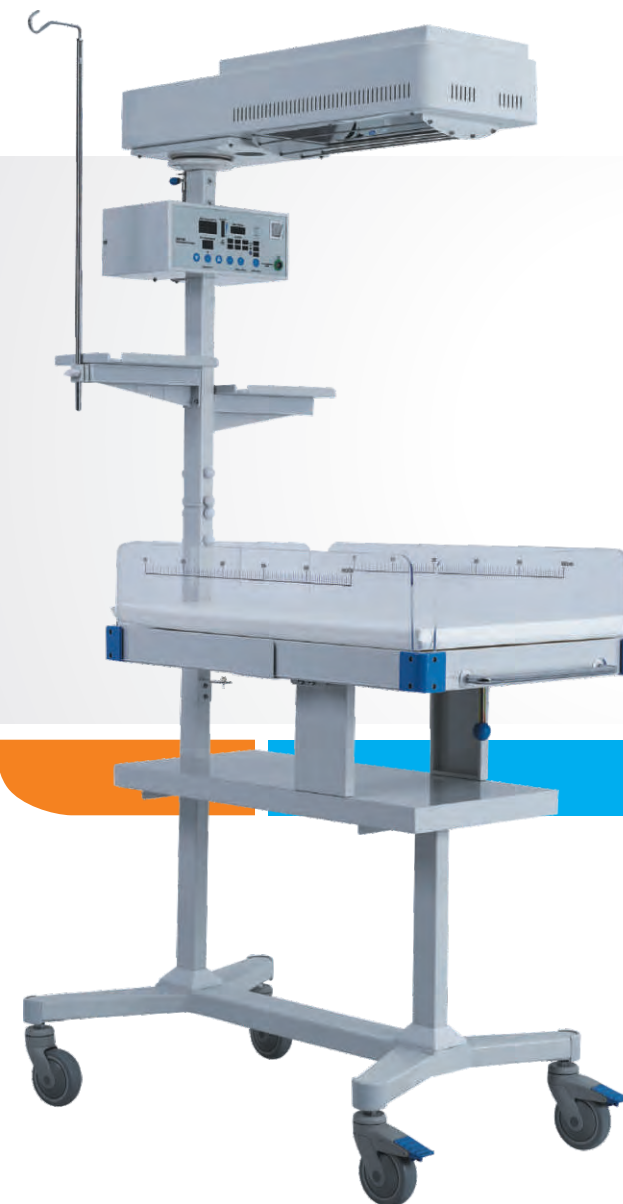
Vertical Height Adjustment Stand (VHA Stand)
Weighing System

Requirements of Environment

Environment temperature: 20 °C~30°C.
(Set temperature should be higher 3°C than the environment temperature).
Wind speed of environment: ≤0.3m/s.

Package

Package: each unit is packed as two cartons
Size (Main body): 108.5mm x 64mm x 91.5mm
(Cabinet): 112.5mm x 66.5mm x 73mm
Gross Weight (Main body): 66Kg (for GT550-104)
68Kg (for GT550-103)
(Cabinet): 80Kg



» GT560-500 Infant Radiant Warmer

Specification

- Power supply: AC220V-230V, 50Hz.
- Input power: 600VA.
- Mode of control: Pre-warm mode control, manual mode control and baby mode control by micro-computer.
- Control range of baby temperature: 34.5-37.5°C.
- Indicate range of baby temperature: 5°C-65°C.I
- Accuracy of skin temperature sensor: ≤0.3°C.
- Uniformity of temperature: ≤2°C.
- Angle of radiant box: 0°, 30°, 45°for two ways.
- Inclination of the bassinet: the five tile position.
- APGAR timer: it will give sound when the unit is working on 1',5', 10'.
- Failure alarm: over temperature alarm, deviation alarm, sensor failure alarm, power failure alarm, setting alarm, checking alarm and so on.

Requirements of Environment

Environment temperature: 18 °C~30°C.
Wind speed of environment: ≤0.3m/s.

Package

Package: each unit is packed to one carton
Size: 111cm x 62.5cm x 119.5cm
Gross Weight: 60kg

Brief Introduction:

- Three control modes: Pre-warm mode, manual mode and baby mode controlled by micro-computer.
- Set temperature and baby temperature can be displayed separately.
- Horizon angle of radiator and inclination of the bassinet can be adjusted.
- The glass panels around bassinet can be disassembled.
- APGAR timer.
- Failure alarm indication.
- RS232 connector.

Standard Configuration:

Main body includes Heater head, temperature controller, bassinet, stand, I.V. Pole, tray.



GT560-200

>> GT560-200 Series Infant Radiant Warmer



GT560-200A



GT560-200B

Brief Introduction:

- Three control modes: Pre-warm mode control, manual mode control and baby mode control by micro-computer.
- Set temperature and baby temperature can be displayed separately.
- Horizon angle of radiator and inclination of the bassinet can be adjusted.
- The glass panels around bassinet can be turned outward.
- X-ray cassette under the bassinet.
- APGAR timer.
- Blue timer.
- Failure alarm indication.
- RS232 connector.

Standard Configuration:

GT560-200: the heater head, the bassinet, the main column, the mobile stand, the controller, the I.V. Pole and the tray.

GT560-200B: based on GT560-200, added with the phototherapy radiant box.

GT560-200A: based on GT560-200B, added with the Breath resuscitation bag, Infant head fixing unit. Low-pressure suction unit, the oxygen cylinders, buoy type oxygen regulator, wall type oxygen regulator are the optional parts.

Optional equipments: Vertical Height Adjustment Stand(VHA Stand)

All of above three models can be optional equipment electric lift stand.

Requirements of Environment

Environment temperature: 18 °C~30°C.
Wind speed of environment: ≤0.3m/s.

Specification

- Power supply: AC220V-230V, 50Hz.
- Input power: 700VA (GT560-200 for fixed stand) 750VA (GT560-200A/200B for fixed stand) 1000VA (for VHA stand).
- Mode of control: Pre-warm mode control, manual mode control and baby mode control by micro-computer.
- Control range of baby temperature: 34.5-37.5°C.
- Indicate range of baby temperature: 5°C-65°C.
- Accuracy of skin temperature sensor: ≤0.3°C.
- Variability of temperature: ≤0.5°C.
- Uniformity of temperature: ≤2°C.
- Angle of radiant box: 0°, 30°, 60° for two ways.
- Inclination of the bassinet: ±10°.
- APGAR timer: it will give sound when the unit is working on 1', 5', 10'.
- Failure alarm: over temperature alarm, deviation alarm, sensor failure alarm, power failure alarm, setting alarm, checking alarm and so on.
- Max. bilirubin radiation on mattress: ≥2000uW/cm² (GT560-200B, GT560-200A).
- Bilirubin uniformity of radiating on the mattress effective range: >0.4 (GT560-200A/GT560-200B).
- Wave length of blue light: 420-470nm.

Package

Package: each unit is packed to one carton.
Size (Main body): 127cm x 81cm x 112cm.
Gross Weight: 110kg (GT560-200), 120kg (GT560-200B), 142kg (GT560-200A).



>> GT560-400 Infant Radiant Warmer

Specification

- Power supply: AC220V-230V, 50Hz
- Input power: 850VA
- Mode of control: Pre-warm mode control, manual mode control and baby mode control by micro-computer
- Control range of baby temperature: 34.5-37.5°C
- Indicate range of baby temperature: 5°C-65°C
- Accuracy of skin temperature sensor: ≤0.3°C
- Uniformity of temperature: ≤2°C
- Wave length of blue light: 420~470nm
- Timing range of blue light: 0~9999hrs, 59min
- APGAR timer: it will give sound when the unit is working on 1', 5', 10'.
- Failure alarm: over temperature alarm, deviation alarm, sensor failure alarm, power failure alarm, setting alarm, checking alarm and so on.
- Max. bilirubin radiation on mattress: ≥600uW/cm²
- Bilirubin uniformity of radiating on the mattress effective range: >0.4

Requirements of Environment

Environment temperature: 18 °C~30°C.
Wind speed of environment: ≤0.3m/s.

Package

Package: each unit is packed to one carton
Size (Main body): 94cm x 57cm x 108cm
Gross Weight: 57kg

Brief Introduction:

- 3 kinds of control mode: Pre-warm mode, Manual mode and Baby mode.
- Set temperature and skin temperature can be displayed separately.
- Main body is made of Stainless steel.
- Double sides phototherapy radiant box.
- Acrylic glass bassinet.
- APGAR timer.
- Blue timer.
- Failure alarm indication.
- RS232 connector.

Standard Configuration:

It is mainly composed of the heater head, temperature controller, bassinet, phototherapy and the stand and so on.



» GT560-300 Infant Radiant Warmer

Specification

- Power supply: AC220V-230V, 50Hz.
- Input power: 600VA.
- Mode of control: Pre-warm mode control, manual mode control and baby mode control by micro-computer.
- Control range of baby temperature: 34.5-37.5°C.
- Indicate range of baby temperature: 5°C-65°C.
- Accuracy of skin temperature sensor: $\leq 0.3^{\circ}\text{C}$.
- Uniformity of temperature: $\leq 2^{\circ}\text{C}$.
- Angle of radiant box: 0°, 30°, 60° for two ways.
- Inclination of the bassinet: the three tile position.
- APGAR timer: it will give sound when the unit is working on 1', 5', 10'.
- Failure alarm: over temperature alarm, deviation alarm, sensor failure alarm, power failure alarm, setting alarm, checking alarm and so on.

Requirements of Environment

Environment temperature: 18 °C~30°C.
Wind speed of environment: $\leq 0.3\text{m/s}$.

Package

Package: each unit is packed to one carton
Size (Main body): 122cm x 67cm x 110cm
Gross Weight: 100kg

Brief Introduction:

- Three control modes: Pre-warm mode control, manual mode control and baby mode control by micro-computer.
- Set temperature and baby temperature can be displayed separately.
- Horizon angle of radiator and inclination of the bassinet can be adjusted.
- The glass panels around bassinet can be turned outward.
- X-ray cassette under the bassinet.
- APGAR timer.
- Failure alarm indication.
- RS232 connector.

Standard Configuration:

Main body includes heater head, bassinet, main column, mobile stand, temperature controller, I.V. Pole and tray.



» GT570-500/GT570-105 Neonate Bilirubin Phototherapy Equipment

GT570-500

- 1、Blue fluorescent lamp as the phototherapy radiating elements.
- 2、Angle of lamp module can be adjusted.
- 3、Height of lamp module can be adjusted.
- 4、Timer.
- 5、Wheels can be locked.
- 6、Stainless support pole.

GT570-105

- 1、LED fluorescent lamp as the phototherapy radiating elements.
- 2、Angle of lamp module can be adjusted.
- 3、Height of lamp module can be adjusted.
- 4、Timer.
- 5、Wheels can be locked.
- 6、Stainless support pole.





>> GT606-501A

Multi-parameter Patient Monitor

Specification

- 10.4 inch brightness colorful TFT LCD.
- Simultaneous display of 5/7 lead ECG by one screen.
- Analysis of real time ST segment and arrhythmia.
- 168 hour graphic and tabular trend with data storage.
- Display mode of large character for remote observation.
- Up to 66 beds for networking capacity to connect with HIS.
- 750 group NIBP data for recall and display.
- Digital SPO2 technology supporting function of anti-motion and anti-low perfusion.
- Standard: ECG, NIBP, SPO2, RESP, TEMP, PR, Drug dose calculation, OXYCRG, battery.
- Optional: 12 lead ECG, 2-TEMP, 2-IBP, Recorder, EtCO2 (side stream, main stream), CO.



>> GT606-501B

Multi-parameter Patient Monitor

Specification

- 12.1 inch brightness colorful TFT LCD.
- Simultaneous display of 5/7 lead ECG by one screen.
- Analysis of real time ST segment and arrhythmia.
- 168 hour graphic and tabular trend with data storage.
- Display mode of large character for remote observation.
- Up to 66 beds for networking capacity to connect with HIS.
- 750 group NIBP data for recall and display.
- Digital SPO2 technology supporting function of anti-motion and anti-low perfusion.
- Standard: ECG, NIBP, SPO2, RESP, TEMP, PR, Drug dose calculation, OXYCRG, battery.
- Optional: 12 lead ECG, 2-TEMP, 2-IBP, Recorder, EtCO2 (side stream, main stream), CO.



>> GT606-504

Multi-parameter Patient Monitor

Specification

- 7 inch brightness (800x600) colorful TFT LCD.
- Simultaneous display of 5/7 lead ECG by one screen.
- Analysis of real time ST segment and arrhythmia.
- 48 hour graphic and tabular trend with data storage.
- Display mode of large character for remote observation.
- Up to 66 beds for networking capacity to connect with HIS.
- 600 group NIBP data for recall and display.
- Digital SPO2 technology supporting function of anti-motion and anti-low perfusion.
- Standard: ECG, NIBP, SPO2, RESP, TEMP, PR, Drug dose calculation, OXYCRG, battery.
- Optional: 2-TEMP, Recorder, Central Monitoring System—CMS.



>> GT606-505

Central Monitoring System

Specification

- Connected to 66 bedside units at the same time
- Up to 64 waveforms for 32 bedside monitors (dual screen display)
- 17 types of arrhythmia analysis
- Collect & display multi physiological parameters and waveforms measured by bedside units
- All physiological parameters waveforms (13 channels at most) presentation for one patient
- Bulk storage capacity (96 hour holographic ECG, 240 hour trend graph, 30000 historical data)
- Strong printing functions (any printer at any time, copy screen print, data review print)



>> GT606-506

Laptop Multi-parameter Patient Monitor

Specification

- Palm size and compact structure for easy carrying and operation.
- Clear and bright color LCD with real time display.
- Friendly user interface with touch screen.
- Intelligent Measuring of ECG/NIBP/SpO2/PR/PLETH/TEMP.
- Storage/Review trend data up to 129 hours and 3888 groups.
- Software for uploading/review/printing/storage of history data and long time monitoring on PC, telemetry communication.
- Audio and visual alarm.
- Built-in rechargeable Li-ion battery for up to 5 hour operation.
- Automatic shutdown for power saving.



>> GT606-507

Vital Sign Monitor

Specification

- Standard configuration: NIBP, SPO2, TEMP, Pulse Rate.
- Dual indicator: LCD to display SPO2, TEMP, PLETH and battery capacity, LED to display NIBP and PR.
- Audible and visual alarm with limit to be freely set.
- Triple power: AC, built in rechargeable Ni/MH battery, AA alkaline/rechargeable battery supporting at least 10 hour continuous operation.
- Automatic power off, in case of long time powering on without operation, to protect the built in battery from excessive discharging.
- Supports transmission of patient trend to PC for display, archiving and printing.



>> GT606-508

Laptop Pulse Oximeter

Specification

- Standard configuration: SPO2, TEMP, Pulse Rate.
- Compact and light structure for easy carrying and handling.
- Large LCD to display PLETH and measurement for SPO2, TEMP and PR.
- Able to permanently store 36 hour graphic and tabular trend for recall.
- Capacity of transmitting patient's trend data to PC for further display and management.
- Built in rechargeable Ni/MH battery.
- Indicator to display low battery capacity.
- Automatic power off.

ECG



>> GT606-509 Laptop Pulse Oximeter

Specification

- Compact and light structure for easy carrying and handling
- Large LCD to display PLETH and measurement for SPO2, TEMP and PR
- Able to permanently store 36 hour graphic and tabular trend for recall
- Capacity of transmitting patient's trend data to PC for further display and management
- AA alkaline or rechargeable battery supporting 7 hour continuous operation
- Indicator to display low battery capacity
- Automatic power off
- Automatic power off



>> GT147-500A Fingertip Pulse Oximeter

Specification

- Mini and light design with "all in one" integrated for easy carrying
- LED screen to display measurements of SPO2, PR and pulse strength
- Immediate and real time spot check
- Single button interface for easy operation
- AAA alkaline or rechargeable battery supporting 3 hour continuous operation
- Indicator to display low battery capacity
- Automatic power off



>> GT147-500B Fingertip Pulse Oximeter

Specification

- Mini and light design with "all in one" integrated for easy carrying
- 64k Color OLED Display, with adjustable four direction
- Immediate and real time spot check
- Single button interface for easy operation
- AAA alkaline or rechargeable battery supporting 3 hour continuous operation
- Indicator to display low battery capacity
- Automatic power off

>> GT607-300 Laptop Fetal Doppler

Specification

- Pocket design, easy and convenient to use
- High quality loudspeaker, clear timbre, volume can be adjusted
 - Sound alarm function when FHR is not in normal range
 - Two FHR modes: real-time and average
- Big LCD for dynamic display of FHR and battery energy
- Matching different battery: AA battery, 9V battery or rechargeable battery
 - Continuous working time > 8 hours
- Built-in loudspeaker: audio output can connect recorder and earphone
 - Customized color option of blue and pink



>> GT606-510 12 Channel Holter System

Specification

- Standard 12 channel, 24 hour Holter system.
- 10 leadwire ECG cable to guarantee high quality ECG data.
- High resolution LCD to display ECG trace and operation status of the recorder.
- Built in SD card with bulk capacity and ability to avoid damage due to frequent plug in and plug out.
- Patient event button to help doctor know exactly some special ECG data.
- AHA and MIT database validated software to assure 99.8% template accuracy.
- Multi-window display to ease operation and refrain the operator/doctor from excessive works in the process of data management.
- Standard diagnostic tools for effective analysis Arrhythmia, ST-T change, QTd, Af/Af, HRV, OASIS, with optional HRT, Pace maker detection and VLP.
- Customized language setting to help customer-sided language transformation.
- Extra recorder as optional configuration.



>> GT147-1201 12 Channel Interpretive ECG

Specification

- 6/(6+1)/12 channel printout format
- 6 inch flexible 320x240 LCD to display 12 channel ECG waveform, setting menu and operating conditions of the unit
- Rhythm lead with histogram and trend graph for R-R interval
- Automatic measurement and interpretation of standard ECG parameter
- Memory of at least 300 exams for recall and duplication
- Built in RS232/USB interface supporting data transmission to PC
- Dual power operation, AC and Li-ion battery supporting 2 hour operation
- Paper size: 210mmx20m, roll type/ 210mmx140mmx20m, Z fold



>> GT147-106 6 Channel Interpretive ECG

Specification

- 3/(3+1)/(6+3)/6 channel printout format
- 5 inch graphic 320x240 LCD to display 3/(3+2)/6/12 channel ECG waveform, setting menu and operating conditions of the unit
- Rhythm lead with histogram and trend graph for R-R interval
- Automatic measurement and interpretation of standard ECG parameter
- Memory of at least 128 exams for recall and duplication
- Built in RS232/USB interface supporting data transmission to PC
- Dual power operation, AC and Li-ion battery supporting 2 hour operation
- Paper size: 112mmx20m, roll type





>> GT147-103A 3 Channel Interpretive ECG

Specification

- 1/2/3/(3+2) channel printout format.
- 20x4 character LCD to display setting menu and operating conditions of the unit.
- Rhythm lead with histogram and trend graph for R-R interval.
- Automatic measurement and interpretation of standard ECG parameter.
- Memory of at least 128 exams for recall and duplication.
- Built in RS232/USB interface supporting data transmission to PC.
- Dual power operation, AC and Li-ion battery supporting 2 hour operation.
- Paper size: 63mmx20m, roll type.



>> GT147-103B 3 Channel Interpretive ECG

Specification

- 1/2/3/(3+2) channel printout format.
- 3.8 inch graphic 320x240 LCD to display 3/6/12 channel ECG waveform, setting menu and operating conditions of the unit.
- Rhythm lead with histogram and trend graph for R-R interval.
- Automatic measurement and interpretation of standard ECG parameter.
- Memory of at least 128 exams for recall and duplication.
- Built in RS232/USB interface supporting data transmission to PC.
- Dual power operation, AC and Li-ion battery supporting 2 hour operation.
- Paper size: 63mmx20m, roll type.



>> GT147-101A 1 Channel Interpretive ECG

Specification

- 1 / 2 channel printout format.
- 192x64 graphic LCD to display 1 channel ECG waveform, setting menu and operating conditions of the unit.
- Rhythm lead with histogram and trend graph for R-R interval.
- Automatic measurement and interpretation of standard ECG parameter.
- Memory of at least 85 exams for recall and duplication.
- Built in RS232/USB interface supporting data transmission to PC.
- Dual power operation, AC and Li-ion battery supporting 2 hour operation.
- Paper size: 50mmx20m, roll type.



>> GT147-101B 1 Channel Interpretive ECG

Specification

- 1 / 2 channel printout format.
- 20x2 character LCD to display 1 channel ECG waveform, setting menu and operating conditions of the unit.
- Rhythm lead with histogram and trend graph for R-R interval.
- Automatic measurement and interpretation of standard ECG parameter.
- Memory of at least 85 exams for recall and duplication.
- Built in RS232/USB interface supporting data transmission to PC.
- Dual power operation, AC and Li-ion battery supporting 2 hour operation.
- Paper size: 50mmx20m, roll type.

Oxygen Generator

- >> GT620-305 (without Nebulizer)
- >> GT620-307 (without Nebulizer)
- >> GT620-305N (with Nebulizer)
- >> GT620-307N (with Nebulizer)

With oxygen concentration display, low oxygen concentration alarm

Oxygen Concentrator
Oxygen flux: 1~3L/min / 1~5L/min
Oxygen density: ≥90%
Output pressure: 0.04~0.06MPa
Power: ≤400VA / ≤600VA
Power supply: 220±10%V 50HZ
Noise: ≤55dB



Nebulizer Spare Part





>> GT607-500 Pocket Fetal Doppler

Introduction:

Sonoline B Pocket Fetal Doppler is a hand-held obstetrical unit, which can be used in hospital, clinic and home for daily self-check by pregnant woman. It contains components of ultrasonic signal transmitter and receiver, analog signals processing unit, FHR calculating unit, LCD display control unit etc. Sonoline B Pocket Fetal Doppler is a high performance model with (fetal heart rate) LCD digital display. It has 3 work modes: real-time FHR display mode, averaged FHR display mode, and manual mode. It has audio output and can be connected with earphone or recorder with audio input.

Main Features

- Built-in speaker
- Three work modes: Real-time FHR display mode, averaged FHR display mode and manual mode
- LCD display
- Probe inspection
- Battery status indicator
- Backlight
- Auto Shut-OFF: After 1 minute no signal, power off automatically
- Suitable Using Range: Suitable for use after the 12th week of pregnancy
- Two pieces of standard 1.5V alkaline battery available which can work no less than 10 hours
- Output for headphones
- The probe can be changeable



>> GT607-600 Pocket Fetal Doppler

Introduction:

Pocket Fetal Doppler is a hand-held obstetrical unit, which can be used in hospital, clinic and home for daily self-check by pregnant woman. The device uses color LCD of high resolution to display the fetal heartbeat waveform, and figure out the FHR to help the doctor diagnose in time. It contains components of ultrasonic signal transmitter and receiver, analog signals processing unit, FHR calculating unit, LCD display control unit etc. It has 3 work modes: real-time FHR display mode, averaged FHR display mode, and manual mode. It also has audio output, and can be connected with earphone or recorder with audio input.

Main Features

- Beautiful shape, portable, easy operation.
- The probe has bending structure which is easy to operate and can increase the ease of the pregnant women, embodies the humane care design.
- Fetal heart rate values, bar graph and heartbeat waveform color screen display.
- Alarming in red when the fetal heart rate range is out of the normal range
- Battery status indicator.
- The probe can be changeable.
- Probe inspection.
- Built-in speaker.
- Output for headphone.
- Auto shut off.
- Two pieces of standard 1.5V alkaline battery available which can work no less than 8 hours.

>> GT607-700 Baby Sound A Pocket Fetal Doppler

Introduction:

Baby Sound A Pocket Fetal Doppler is a hand held equipment for detecting Fetal Heart Rate (FHR) which is specially designed for family of pregnant women to conduct daily detection of FHR by themselves. Pregnant women can operate by themselves to hear fetal heart sound and calculate FHR to realize the purpose of pre-monitoring and fetus caring.

Main Features

- The probe and main units integrated together.
- Delicate and compact design, portable to use.
- Particular 2 Headphone Sockets design can let expectant mother and father hear the fetal heart sound together.
- High sensitive doppler probe.
- Low ultrasound output intensity, much lower than the relative government standard and with high safe quality.
- Low power consumption, two AAA size batteries can last more than 8 hours for continuous use (depend on battery type and volume).
- Can be connected to a computer or recorder to record the fetal heart sound with recording cable.
- Output for headphones.
- The probe can be changeable.



>> GT607-800 Baby Sound B Pocket Fetal Doppler

Introduction:

Baby Sound B Pocket Fetal Doppler is a hand held equipment for detecting Feta Heart Rate (FHR) which is specially designed for family of pregnant women to conduct daily detection of FHR by themselves. Pregnant women can operate by themselves to hear fetal heart sound and calculate FHR to realize the purpose of pre-monitoring and fetus caring. Baby Sound B is a high performance model with LCD digital display.

Main Features

- The probe and main units integrated together.
- Delicate and compact design, portable to use.
- Particular 2 Headphone Sockets design can let expectant mother and father hear the fetal heart sound together.
- High sensitive doppler probe.
- Low ultrasound output intensity, much lower than the relative government standard and with high safe quality.
- Low power consumption, two AAA size batteries can last more than 8 hours for continuous use (depend on battery type and volume)
- Can be connected to a computer or recorder to record the fetal heart sound with recording cable.
- LCD FHR Display with high accuracy.
- Screen will be locked automatically without signal for 15s, which is convenient for pregnant women to operate individually.



Ultraviolet Sterilizing Lamp Car



>> GT608-101I / 101IA

Double-tube Carbon Steel Ultraviolet Lamp Cart

Product Details:

It is made from carbon steel in the design of dual tube; technical parameters as follows:

1. Tube powder $\geq 30W \times 2$
2. Number of tubes: 2pcs
3. Applicable static volume $\geq 50m^3$
4. Power voltage: $220V \pm 10\%$, frequency: $50Hz \pm 10\%$
5. Input power: 180VA
6. Ultraviolet wave length: 253.7nm
7. Radiation strength: $\geq 214uw/cm^2$
8. It is movable and foldable, allowable to hide tubes and adjust angle at 30° , 60° , 90° , 135° or 180° .
9. It is provided with a timer from 0 to 120 minutes, with long-open function, and will ring bells after reaching the time.

>> GT608-102

Infrared Sensing Ultraviolet Sterilization Lamp Trolley

Product Details:

Technical Parameters:

1. Tube powder $\geq 30W \times 2$, number of tubes: 2pcs, free from ozone quartz material
2. Sterilization lifespan of tube: $\geq 6000h$, with intellisense
3. After turning on the sterilizing lamp, it can not be lit once there is someone entering the room
4. It will give an alarm or put out immediately if there is someone or animal bursting into the room during sterilization
5. It is movable and foldable, and equipped with a timer, can be timed 0~1440 minutes.
6. Time delay switch: It will shine normally after people leave
7. 254nm radiation strength (1m) $\geq 120uw/m^2$



>> GT608-103IC / 103IB

Four-pipe Carbon Steel UV-lamp Trolley

GT608-103IC

Product Details:

It is made from carbon steel in the design of four-tube; technical parameters as follows:

1. Tube powder $\geq 30W \times 4$
2. Number of tubes: 4pcs
3. Applicable static volume $\geq 100m^3$
4. Power voltage: $220V \pm 10\%$, frequency: $50Hz \pm 10\%$
5. Input power: 180VA
6. Ultraviolet wave length: 253.7nm
7. Radiation strength: $\geq 428uw/cm^2$
8. It is movable and foldable, allowable to hide tubes and adjust angle at 30° , 60° , 90° , 135° or 180°
9. It is provided with a timer from 0 to 60 minutes, and will ring bells after reaching the time.



GT608-103IB

Bedsore Prevention Cure Mattress



>> GT143-102

Bedsore Prevention Cure Mattress

Material: PVC material (EN-71, non-toxic)
Thickness: 0.35mm
Size: 7.8"x34" (inflated)
Air output: 4~6L/min
Cycle time: 5minutes
Supply voltage: 220V/110V
Pressure range: 110-140mmHg
Ball height (inflated): 21/2"
Number of cells (inflated): 130
Power Line Length: 1.8m

>> GT143-101

Bedsore Prevention Cure Mattress

Thickness: 0.35mm
Size: 316cmx94cm (inflated)
Height of interchangeable tube: 11cm
Number of interchangeable: 18
Air output: 4-6L/min
Cycle time: 10 minutes
Power: 220V/110V
Pressure range: 70 – 210mmHg
Power cord length: 1.8m



>> GT143-105

Bedsore Prevention Cure Mattress

Thickness: 0.35mm
Size: (inflated) 199cmx100cm
Air output: 4~6L/min
Cycle time: 6minutes
Power: AC220V±10% 50Hz
Pressure range: > 13000 Pa
Power Line Length: 1.8m
Noise: < 40dB
Number of interchangeable: 22



Oxygen Bag / Oxygen Cylinder



>> GT630-200

Oxygen Bag

Major specifications: 30L/42L/50L
It is made of non-poisonous nylon with rubber materials applied on single face which has no adverse chemical effects. It is mainly used for emergency use in hospital and as healthcare product at home. It characterized with easy to clean, safety, durable and easy to carry.

>> GT630-300

Oxygen Cylinder (steel)

(major specification: 2L, 3.2L, 4L)

Adopting unique design of combination of pressure-reducing valve and safety valve .Compact in structure, fancy and safe, equipped with flow regulator, stable output pressure.

Adopting empty- inside packing (we have acquired the patent for this packing) unique double-way design(needn't open the lower valve when breathing oxygen, relieves user's fear for the pressure containers)

Strong, tough, collision, protection. It is easy to carry and move for its mini-size and lightweight.



GT630-300 A (Steel)



GT630-300 B 10L 8L 6.3L
Oxygen Cylinder 6L/8L/10L(with a trolley)

Infusion Stand



>> **GT140-518**
Infusion Stand



>> **GT140-102**
Infusion Stand
H:116cm-206cm



>> **GT140-519**
Infusion Stand
H:133cm-223cm



>> **GT140-515**
Infusion Stand
H:136cm-230cm



>> **GT140-513**
Infusion Stand
H:74cm-90cm



>> **GT140-516**
Infusion Stand
H:120cm-200cm

Trolley / History Trolley



>> GT505-300

Trolley

5 drawers: 2 small (70mm in height), 2 medium (140mm in height), and 1 large (210mm in height).

Standard accessories: 2 garbage bins, 1 transparent file box, 1 sliding side board, 1 metal salver, and 1 I.V. pole.

>> GT505-400

Trolley

- Material: aluminum alloy, ABS plastic and stainless steel.
- Overall size: 850x520x1010mm.
- 6 layers of drawers, can be pulled out from both sides, self-lock when closed; total 50 medicine boxes on all drawers, on front of each medicine box, case-history cards stuck.
- Accessories: 2 pcs of garbage bins, 1 pc of transparent file box, 1pc of sliding side board, and 1set of five-hooks hanging device.



>> GT505-100

History Trolley

42 pcs of case-history folders and 1big drawer, all can be locked to keep the patient's history data inside safe.
4 pcs of 125mm castors, two with brake and two without
Weight: 65KGS.



Movable Table



>> GT504-101

Movable Table

Wooden Table
Adjustable Height: 640mm-935mm



>> GT504-102

Movable Table

Plastic Table
Aluminum-Alloy Column
Adjustable Table: 640mm-935mm



>> GT504-103

Movable Table

PP Plastic
Aluminum-Alloy column
Adjustable Height: 660mm-955mm

Transfusion Chair / Waiting Chair



>> GT503-100
Transfusion Chair
 Specification: 77x68x108cm
 Packing size: 92x62x35cm
 Net Weight: 21.5kg
 Description: the fabric is pressed PVC, artificial leather, 3 angles adjustable.



>> GT503-510
New Transfusion Chair
 Specification: 82x70x102cm
 Net Weight: 25kg
 Description: the fabric is pressed PVC, artificial leather, not adjustable.



>> GT503-200
Stainless Steel Transfusion Chair
 Specification: 77x68x108cm
 Packing size: 92x62x35cm
 Net Weight: 22kg
 Description: the fabric is pressed PVC, artificial leather, with table, 3 angles adjustable.

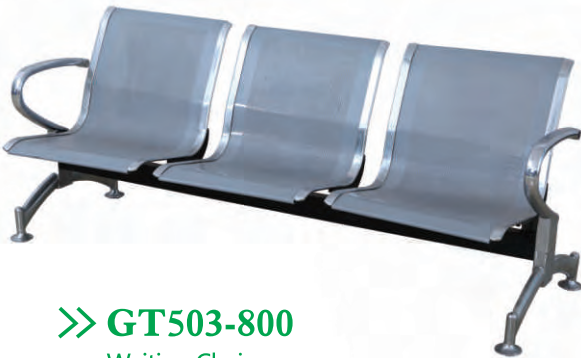


>> GT503-300
Children Transfusion Chair
 Specification: 77x68x108cm
 Packing size: 92x62x35cm
 Net Weight: 19kg
 Description: the fabric is pressed PVC, artificial leather, with table, not adjustable.



>> GT503-400
Stainless Steel Transfusion Chair
 Specification: 77x68x108cm
 Packing size: 92x62x35cm
 Net Weight: 20kg
 Description: the fabric is pressed PVC, artificial leather, 2 angles adjustable

>> GT503-520
Luxury Transfusion Chair
 Specification: 90x75x110cm.
 Packing size: 100x60x44cm.
 Net Weight: 31kg.
 Description: the fabric is pressed PVC, artificial leather, 3 angles adjustable, with rotatable table.



>> GT503-800
Waiting Chair
 Width: 54cm for single chair.
 Net Weight: 33kg.
 Description: plastic coated surface, galvanized armrest.



>> GT503-810
Stainless Steel Waiting Chair
 Width: 54cm for single chair.
 Net Weight: 26kg.
 Description: arm, foot, seat, and back all stainless steel, steel tube beam with powder coating.

Inspect Bed



>> GT506-001

Stainless Steel Inspecting Bed I Type
Specification: 1900x600x620mm



>> GT506-002

Stainless Steel Inspecting Bed II Type
Specification: 1900x600x620mm



>> GT506-003

Stainless Steel Inspecting Bed III Type
Specification: 1900x600x620mm



>> GT506-004

Gynecology Inspecting Bed
Specification: 1800x570x800mm



>> GT506-005

Gynecology Inspecting Bed
Specification: 1800x570x800mm



>> GT506-006

Gynecology Inspecting Bed
Specification: 1800x570x800mm



>> GT506-007

Gynecology Inspecting Bed
Specification: 1400x570x700mm



>> GT504-900

Nurse Chair
Specification: ϕ 300x500/660mm



Nurse Chair

>> GT504-901

Nurse Chair
Specification: ϕ 300x500/660mm



>> GT504-902

Nurse Chair
Specification: ϕ 300x500/660mm



>> GT504-903

Nurse Chair
Specification: ϕ 300x500/660mm



>> GT504-904

Nurse Chair
Specification: ϕ 300x500/660mm



>> GT504-905

Nurse Chair
Specification: ϕ 360x550/710mm



>> GT504-906

Nurse Chair
Specification: ϕ 360x550/710mm

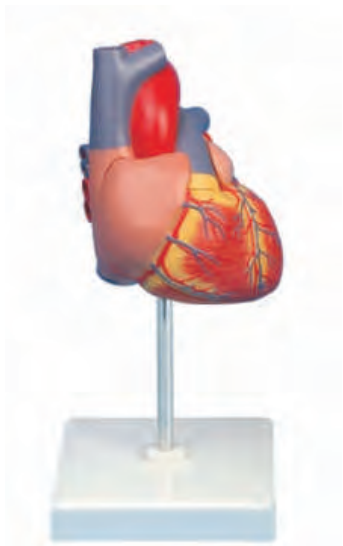


>> GT504-907

Nurse Chair
Specification: ϕ 380x430/530mm

Others

Adult Heart Model
Human Skeleton Model



>> GT512-101

Adult Heart Model

Size: Life size, 2parts
Material: PVC



>> GT512-102

Human Skeleton Model

Features:

The model shows all the anatomic details of skeleton structure.
Joint and upper, lower extremities is removable.
Size: 180cm
Material: Advanced PVC
PACKAGE SIZE: 97x45.5x28cm
G.W.: 14KGS



>> GT512-103

Human Skeleton Model

Features:

Metal hanger, normal erect posture, limbs can be removable, display bony framework and physical relations.
Size: 85cm
Material: Imported PVC
PACKAGE SIZE: 19x19x26cm
G.W.: 1.3KGS

CPR Training Manikin

>> GT512-104 CPR Training Manikin

Features:

1. Simulate standard open airway and sound prompting
2. External breast compression: indicator light display ,digital counter display and sound prompting
 - a.Indicator light display of correct and wrong compression position; digital counter display; sound prompting of wrong compression.
 - b.Display of correct (at least 5cm) and wrong (less than 5cm) compression intensity; digital strip indicator light (yellow, green ,red) shows compression depth; counter display; sound prompting of wrong operation.
3. Artiifiical respiration (Inhalation) indicator light display, digital counter display and sound prompting:
 - a. Inhalation is $\leq 500\text{ml}/600\text{ml}-1000\text{ml}$; strip indicator light shows inhalation volume; counter display of correct and wrong operations, and sound prompting of wrong operation.
 - b.Inhalation too quickly or too much result in air entering into stomach, counter display of sound prompting of wrong operation.
4. Ratio of compression and artificial respiration: 30:2(one or two person)
5. Operating cycle: one cycle includes five times of 30:2 ratio of compression and artificial respiration.
6. Operating frequency: at least 100 times per minute
7. Operation methods: exercise operation; examine operation
8. Operation time: counting down device
9. Print: print operation result

10. Examination of pupil response: mydriasis and myosis
11. Examination of carotid response: simulate spontaneous carotid pulse in compression process
12. Working conditions: Input power is 110-240V

Main Components

1. Full body manikin (1)
2. Monitor (1)
3. Portable plastic box (1)
4. CPR operation pad (1)
5. CPR face shield sheet (50pcs/box)
6. Exchangeable lung bag (5)
7. Exchangeable face skin (1)
8. Temperature sensing print paper (2 roll)
9. Guide manual (1)

Package

SIZE: 97x33x58cm
G.W.: 22KGS

Optional Function:

1. Endotracheal intubation
2. Gastrolavage
3. Trauma limbs



Brain with Arteries Model Basic Nursing Manikin / Skull Model



>> GT512-105 Brain with Arteries Model

Size: Life size, 9parts
Material: PVC



>> GT512-106 Basic Nursing Manikin

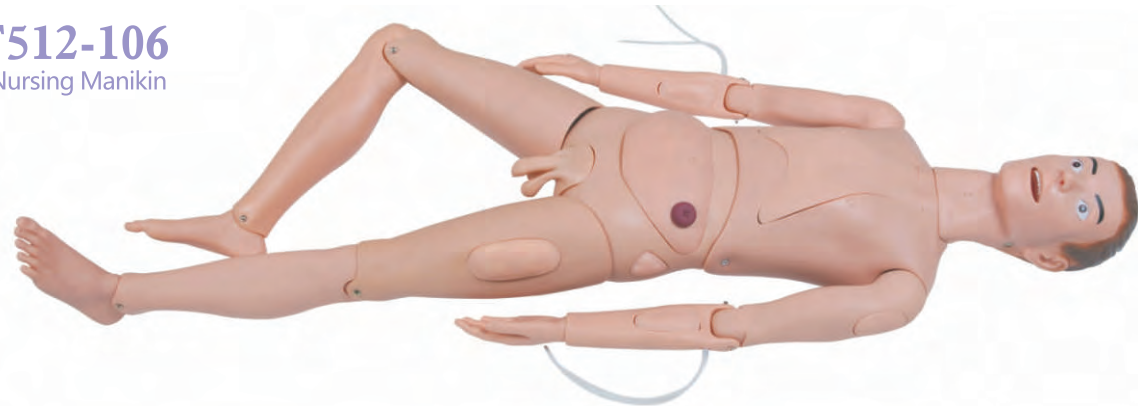
Features:

1. Hair and face washing
2. Eye and ear washing and administering
3. Mouth cavity and artificial teeth care
4. Endotracheal intubation
5. Sputum suction
6. Oxygen inhaling
7. Oral and nasal feeding
8. Gastrolavage
9. Main organs in the thoracic cavity
10. Venipuncture, injection, blood transfusion(Arm)
11. Deltoid subcutaneous injection
12. Vastus lateralis injection
13. Thoracic cavity , abdominal cavity, liver, bone marrow and lumbar puncture
14. Enema
15. Female urethral catheterization
16. Male urethral catheterization
17. Female bladder irrigation
18. Male bladder irrigation
19. Ostomy

20. Buttocks intramuscular injection
21. Main organs in the abdominal wall
22. Holistic nursing: sponge bath, replacing clothes
23. Tracheotomy care

Package

SIZE: 127x48x22cm G.W.: 16.2KGS



>> GT512-107 Skull Model

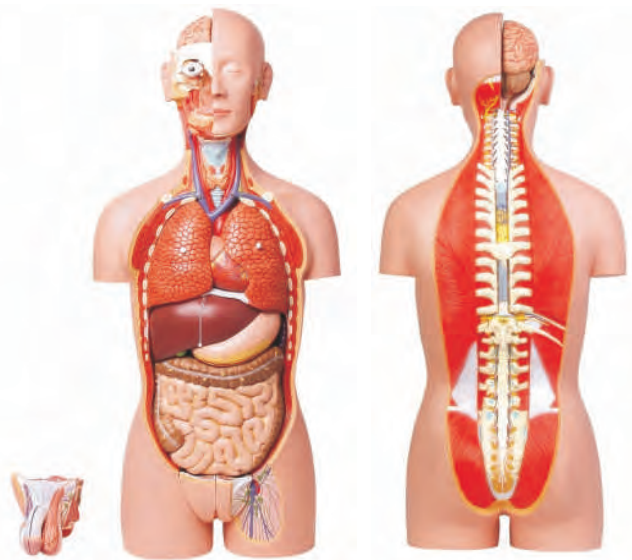
Features:

Mounted on a base
Material: Advanced PVC
PACKAGE SIZE: 22x16x23.5cm
G.W.: 1KGS
Size: 85cm
Material: Imported PVC
PACKAGE SIZE: 19x19x26cm
G.W.: 1.3KGS

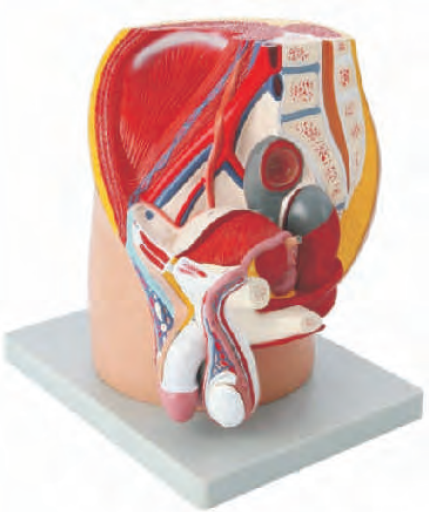
Dual-Sex Torso-27 parts Basic Nursing Manikin



Median Section of Male Pelvis Model Median Section of Female Pelvis Model Eyes Model-6parts



» GT512-108
Dual-Sex Torso-27 parts
Size: 85cm
Material: PVC

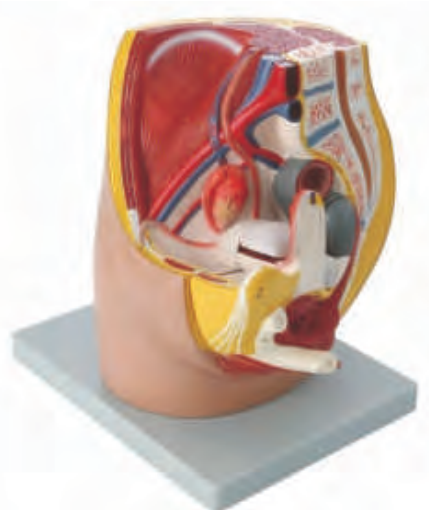
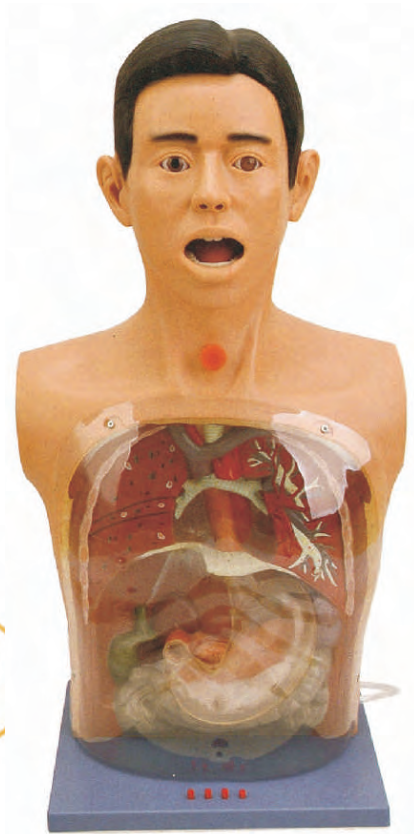


» GT512-110
Median Section of Male Pelvis Model
Size: Life size, 4parts
Material: PVC

» GT512-109 Basic Nursing Manikin

Features:

1. Oxygen inhalation
2. Nasal feeding
3. Gastrolavage
4. Duodenal drainage
5. Esophageal and gastric balloon tamponade surgery
6. Deltoid subcutaneous injection
7. Subcutaneous puncture
8. Venipuncture, injection, blood transfusion (Arm)
9. Male/female urethral catheterization
10. Male/female urethral catheterization
11. Gauze drainage can be practiced in the fistula of wound.



» GT512-111
Median Section of Female Pelvis Model
Size: Life size, 4parts
Material: PVC

» GT512-112 Eyes Model-6parts

Size: 3times magnified, 6parts
Material: PVC

